

Working with the Met

Life & Health Sciences

Through the Connected programme businesses can access expertise, skills and facilities on Life and Health Sciences. Belfast Met works closely with a wide range of companies in the Life and Health Science Sector, from companies delivering care in the community to laboratories carrying out analysis.

Knowledge Transfer

The Connected programme has enabled the College to work alongside universities to develop appropriate support for businesses. One partnership with Ulster University has resulted in a Knowledge Transfer Partnership project with Advanced Community Care where the College and university are working together to impart specialist knowledge in emerging technologies and community care business models to help the company develop a unique, innovative care delivery model.



Training is also available to upskill employees on Laboratory Skills including HPLC and GC-MS. This training is approved by the Royal Society of Chemistry and can be used to support the RSC CPD programme.

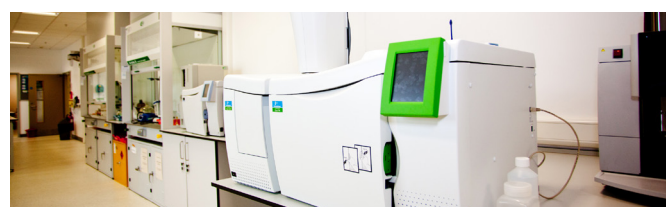
A full list demonstrating how the facilities could work for you are outlined below:

Industry Events

In addition, Connected has supported Belfast Met to host innovative conferences through the Northern Ireland Connected Health Ecosystem (NICH-ECO) on topics such as 'Digital Health & Community Based Care Delivery – New Models/New Skills'. These events attract SMEs working in the medical device arena, private, public and third sector care providers, and allied health professionals encouraging collaboration and innovation in the sector.

Instrumentation and Analysis Laboratory

With regard to meeting industry need in the analytical sector, Belfast Met's Titanic Quarter has a well-resourced Instrument Room. These facilities are available for business to use for research and development testing, for example, in providing a contaminant evaluation.



Analyte	Method
Group 1 (Proximate Food Analysis)	
Moisture, ash	Gravimetric
Total Protein (A)	Kjeldahl
Total Protein (B)	BCA
Total Fat (A)	Soxhlet/Gravimetric
Total Fat (B)	Spectrophotometry
Total Carbohydrate	Spectrophotometry
Crude Fibre	Gravimetric
Total Calorie Content	Calculation
Group 2 (Nutrient Speciation)	
Fatty Acid Profile	GC-MS
Cholesterol	Spectrophotometry
Reducing Sugars	Spectrophotometry
Whey Protein	HPLC
Soy Protein	HPLC
Group 3 (Micronutrient Speciation)	
Vitamin A	HPLC
Vitamin B6	GC-MS
Vitamin C (A)	HPLC (< 0.1 mg)
Vitamin C (B)	Titration (> 0.1 mg)
Vitamin D	HPLC
Vitamin E	GC-MS
Ions (Na, K, Ca, Mg, Ba)	Flame Emission Spectrometry
Group 4 (Misc. Organics)	
Diacetyl	GC-MS
2,3-Dihydroxybutanone	GC-MS
Acetoacetate	GC-MS
3-D-Hydroxybutyrate	GC-MS
Organic acids	GC-MS
Ethanol	GC (Headspace)
Essential Oils	GC (Headspace)