



Full-Time Courses

**MADE  
FOR  
MORE**

**APPLY  
NOW**

**belfastmet.ac.uk**



**MAKE IT AT THE MET**



# WELCOME

**First of all, I would like to say how delighted we are that you are considering joining us for the next big step in your education.**

We pride ourselves on the wide range of courses available, our great team and first-rate facilities. We know you will find everything you need at Belfast Met to help you fulfil your full potential.

Our goal is simple – to provide you with the technical and professional skills you will require for a future career. Our teaching staff bring real world knowledge to a wide range of courses that are carefully crafted with the needs of employers in mind.

At Belfast Met, you'll find a highly diverse and inclusive learning community, one of the great strengths of our College and one we respect and celebrate. We want you to not only learn but thrive. Above all, we want you to enjoy your time here as you gain the skills you need to succeed in the classroom, the workplace and beyond!

Interim Principal and Chief Executive







# Campus Facilities & Student Spaces

All our student spaces offer a student support hub where you can get information on student funding, inclusive learning, careers and student wellbeing.



## **Titanic Quarter Campus**

The base for our student council and the hub for our wide range of clubs and societies, as well as pool, fossball and table tennis facilities.

[Click to explore Titanic Quarter Campus](#)



## **Millfield Campus**

Our second-floor common room provides space to unwind, with pool and tennis tables a PS4 and range of games for your use.

[Click to explore Millfield Campus](#)



## **Castlereagh Campus**

Discover cutting-edge IT HLAs and Higher Education courses designed to launch your career in the digital world. With expert tutors, industry partnerships, and hands-on learning, Castlereagh Campus is your gateway to success in the fast-growing tech sector.

[Click to explore Castlereagh Campus](#)



## **E3 Campus**

E3 campus is home to the Belfast film and Television school. Most Higher Education creative and media production courses are taught here. It is a state-of-the-art venue that also includes specialist media studio facilities. E3 is one of the first campuses in the United Kingdom to offer a virtual production stage.

[Click to explore e3 Campus](#)







# Student Support Services

## Student Support

The cost of living crisis has heightened the many barriers to education and learning that our students face. To help you overcome these barriers and enable you to strive towards your full potential, we have a wealth of student support services including: Student Wellbeing, Inclusive Learning, Careers and Employability, Student Funding, Students' Union, Student Counselling and a dedicated College Safeguarding Team. Details of all of these services can be found here:

[Student Support](#)

## Student Welfare and Wellbeing

We have a dedicated Centre for Student Wellbeing whose purpose is to create an inclusive environment that supports and empowers students. We aim to do this through timely and accessible information. Providing guidance and access to services which will enable you to understand and proactively manage your wellbeing and mental health. We put an emphasis on not just preventing problems and/or seeking help, but promoting positive wellbeing. Our approach is friendly, confidential and student focused.

[Student Wellbeing](#)

## Library and Information Service

Our modern and vibrant Library Service is designed to provide resources to students both on and off campus. Electronic resources are available 24/7 through our remote learning facilities and our libraries provide physical resources and support for over 50 hours a week. [Library Services](#)





### **Inclusive Learning**

At Belfast Met we welcome and encourage applications from students who have a disability, learning difficulty or long term medical condition. We are committed to ensuring that you have an equal opportunity to gain the maximum benefit from your experience here at the College. We are a dedicated, professional team who operate on all college campuses. We have a range of specialist services that we can offer while you are in College. For further information please email: [inclusivelearning@belfastmet.ac.uk](mailto:inclusivelearning@belfastmet.ac.uk) or call **02890 26 5064 /5097**

### **Student Funding**

For information, advice and guidance on funding options that may be available to you whilst studying please [click here](#), or contact our Student Funding team on **028 9026 5183** or email: [StudentFunding@belfastmet.ac.uk](mailto:StudentFunding@belfastmet.ac.uk)

### **Careers and Employability**

Sometimes knowing where to start is the hardest part. However it is important to take time to consider the various career and pathway options each course can lead to.

Belfast Met's Careers and Employability team is here to help you to better understand career and course options in order that you choose the course that is right for you. When you are on your course, you can also talk to us about how to enhance your skills and qualifications as well as availing yourself of professional support to help you achieve your next step.

Our Careers and Employability service holds the 'Matrix Standard' National Quality Award for information, Advice and Guidance. Contact us on **02890 26 5066** or email: [careers@belfastmet.ac.uk](mailto:careers@belfastmet.ac.uk) to make an appointment.





# Students' Union

## Students' Union

The Students' Union has three main aims.

### 1. Student Voice:

We support your elected Student Council and help to train and support your Class Reps too; ensuring the student voice is heard within the College.

### 2. Student Engagement:

We support and promote various extracurricular activities such as a range of sports clubs and societies.

### 3. Student Welfare:

We campaign for and promote several initiatives targeted at improving student welfare.

For more information about our Students' Union [click here](#).

Keep up to date by following our social channels:



[Facebook](#)



[X](#)



[Instagram](#)



[TikTok](#)



# 93%

of learners agreed their course has developed knowledge & skills they need for the future.

National Student Survey 2025





# Study Levels, Qualifications & Equivalencies

The following table shows you the range of qualifications available at:

- Entry Level,
- Further Education (Level 1, 2 and 3),
- A-levels and,
- Higher Education (Levels 4, 5 and 6)

## Study Levels, Qualifications & Equivalencies

Level	Title	Equivalent to
6	BA (Hons) BSc (Hons)	Bachelor Degrees
5	Level 5 Higher National Diploma	Foundation Degrees Higher National Diplomas Diplomas of Higher Education
4	ILM Level 4 Diploma in Administration Management	Certificates of Higher Education
3	Level 3 Extended Diploma QCF Level 3 NVQ Diploma Level 3 Diploma Level 3 (90-Credit) Diploma Level 3 Subsidiary Diploma	3 GCE A-Levels 3 GCE A-Levels 2 GCE A-Levels 2 GCE A-Level 2 GCE A-Level
2	Level 2 Diploma Level 2 Extended Certificate Level 2 Traineeship Diploma	4 GCSEs A*-C 2 GCSEs A*-C 5 GCSEs A*-C
1	Level 1 Certificate/Award	Number of GCSEs and Grade depend on Examining Body and achievement
	Entry Level	ESOL, Supported Learning



# Entry Requirements

## Academic Course Entry Requirements

Applicants must check course details pages for specific academic entry requirements. Applicants can use this information to ensure that they are currently studying towards the correct level of qualification to meet course entry requirements.

**IMPORTANT:** All applicants must also meet the following conditions:

### Minimum Age Requirement

Applicants must be 16 years old by 1 July 2026. This is set out in the Further Education (NI) Order 1997. Exceptions to this are the arrangements under formal School-College Partnerships – please contact us or your own post-primary school to check if this arrangement might be available to you.

### Right to Study in the UK

Applicants must provide proof of Right to Study in the UK. For courses with work placement, proof of your right to work in the UK is also required. For more information on documents/evidence on Right to Study in the UK, please visit:

[www.belfastmet.ac.uk/full-time/student-status](http://www.belfastmet.ac.uk/full-time/student-status)

### Proof of Identity

Applicants must provide photographic proof of identity.

### Accreditation of Prior Learning

The College welcomes applications from students who do not have academic qualifications but who wish to apply by virtue of experience. For further information, please refer to the Accreditation of Prior Learning at <http://www.belfastmet.ac.uk/media/hfcicz0g/apl-guidance.docx>.

## English Language Competency

- Applicants should check the English language criteria for progression to other further and higher education institutions as these may vary.
- Where a GCSE grade in English is specified as the only qualification accepted, other English competency qualifications may not apply.
- Where an ESOL qualification is used, the appropriate level must be achieved across all skills - Reading, Writing, Speaking & Listening.
- Other qualifications may be accepted as evidence of level of competency on a case-by-case basis. Alternative qualifications/evidence or a diagnostic assessment may be used to establish competency.
- Contact [studentportal@belfastmet.ac.uk](mailto:studentportal@belfastmet.ac.uk) for more information.

## International Qualifications

Belfast Met must verify that applicants holding international qualifications meet the course entry requirements before they can be enrolled onto a course. To help us verify that course entry requirements are met, applicants must:

- Get a full English language translation of your qualifications. Belfast Met will accept the full English translation from UK ENIC [www.enic.org.uk](http://www.enic.org.uk) UK ENIC is the UK National Information Centre for the recognition and evaluation of international qualifications and skills.
- Ensure that the translation provides clear evidence that your qualifications meet or exceed the course entry requirements. UK ENIC can also help with Statements of Comparability and UK Qualification Reference Statements. **There is a charge for this service.**

For more information visit their website at [www.enic.org](http://www.enic.org). The Department for Communities can also provide information and/ or help with qualification equivalencies. For more information visit: [www.communities-ni.gov.uk/](http://www.communities-ni.gov.uk/).

# English Language Qualifications

All courses within Belfast Met are delivered and assessed in English, apart from language specific courses. Your competence in English must be verified prior to enrolling on your chosen course. Belfast Met accepts the following qualifications as evidence of Level of English.

	CEFR	Generally Accepted ELT levels	IELTS	Cambridge Main Suite
Proficient User	C2	Lower Advanced / Advanced	IELTS 7-9	Cambridge CPE grade A-C
	C1	High Intermediate / Lower Advanced	IELTS 6-7	Cambridge CAE grade A-C
Independent User	B2	Intermediate / high Intermediate	IELTS 5-6	Cambridge FCE grade A-C
	B1	Pre-intermediate / Intermediate	IELTS 4-5	Cambridge PET Pass / Merit grade
Basic User	A2	Elementary / Pre-Intermediate	IELTS 2-4	Cambridge KET Pass / Merit grade
	A1	Beginner /Elementary	IELTS 1	

The table above is based upon the Common European Framework for Languages (CEFR)  
[CEFR - Common European Framework of Reference for Languages.](#)

# Your **FIRST CHOICE** for A-Levels

**Make Belfast Met your first choice for A-Levels, with a wide range of subjects to choose from, there is something for everyone. You will study at our Titanic Campus where you will find modern facilities and a real university feel, where our dedicated staff will help prepare you for future study and employment.**

We recognise that for many learners A-Levels are a pathway to university and you will be supported through the completion of your UCAS application. The College maintains strong partnerships with local universities to enhance progression opportunities and many of our students have achieved exceptional academic success whilst others have progressed directly into employment or other training. Our dedicated careers service is always available on campus to support you in your next steps.

Supporting you in achieving success in your A-Levels is our priority and you will be allocated a Personal Tutor who will work with our Year Heads and College management to ensure you have the best learning experience possible. This high level of pastoral care and support for learners is one of our key strengths and 93% of our A-Level students agree that Belfast Met is a great place to study.

## **AS Level**

- 16 or over on 1st July 2026.
- Must have 6 passes (Grade C or above) at GCSE, two of which must be GCSE English Language and GCSE Mathematics.
- In addition meet the subject-specific requirements which can be found on the table on [page 16](#).

## **A2 Level**

- 17 or over on 1st July 2026.
- Must have 3 passes (grades A-E) at AS Level in chosen subjects awarded by the same Awarding Organisation. (We may be able to accept students with passes in Economics and Sociology sat through Awarding Organisations other than AQA.)

## **Fast Track A-Level**

- 18 or over on 1st July 2026.
- Must have a pass grade (A\*- E) in at least one A-Level subject - please note we do not accept Applied A-Levels and BTEC qualifications.
- Must have 6 passes (a minimum 3 Bs & 3 Cs or above) at GCSE, two of which must be GCSE English Language and GCSE Mathematics.
- In addition, meet the subject specific requirements which can be found in the table on [page 17](#).





# AS Level subject-specific requirements below

Subject	GCSE minimum Grade C or as stated below
Biology	GCSE Grade (BB) Double Award Science or GCSE grade C GCSE Biology & GCSE Grades (C,C) in English and Maths. Must also take another STEM related subject
Business Studies	English & Maths with a minimum Grade C* in at least one of these subjects
Classical Civilisation	GCSE Grades (C*C) in English & Maths
Chemistry	GCSE Grade (BB) Double Award Science or GCSE grade C GCSE Chemistry & GCSE Grades (C,C) in English and Maths. Must also take another STEM related subject
Criminology	GCSE Grades (CC) in English & Maths. **Note this is a Level 3 Applied Certificate in Criminology. (AS Level equivalent)
Digital Technology	English & Maths with a minimum grade C* in at least one of these subjects. A Dig Tech/ICT GCSE qualification is preferred.
Economics	English & Maths with a minimum grade B in at least one of these subjects
English Literature	GCSE Grades (BC) in English & Maths
Geography	English, Maths & Geography with a minimum grade B in at least one of these subjects
Government & Politics	GCSE Grades (C*C) in English & Maths
History	GCSE Grades (BC) in English & Maths
Maths	GCSE Grade B Maths (Higher Tier).
Media Studies	GCSE Grades (C*C) in English & Maths
Physics	GCSE Grade (BB) Double Award Science OR GCSE grade (B) Physics and GCSE Grades (C,B,) in English & Maths. Must also take another STEM related subject
Psychology	GCSE Grades (BB) in English & Maths
Religious Studies	GCSE Grades (CCC) in English, Maths & Religious Studies
Sociology	GCSE Grades (C*C) in English & Maths
Spanish	GCSE Grades (CCC*) in English, Maths & Spanish

# Fast Track & A2 subject-specific requirements below

Subjects below with \* offered at A2 (Year 2) only

Subject	GCSE minimum Grade C or as stated below
Biology	Double Award Science minimum grade BB or grade C GCSE Biology.
Business Studies	English & Maths with a minimum Grade C* in at least one of these subjects
Chemistry	Double Award Science with minimum Grade BB or Grade C in GCSE Chemistry
Classical Civilisation*	GCSE Grades (C*C) in English & Maths
Criminology*	GCSE Grades (CC) in English & Maths. **Note this is a Level 3 Applied Diploma in Criminology. (A Level equivalent)
Digital Technology	English & Maths with a minimum grade C* in at least one of these subjects. A Dig Tech/ICT GCSE qualification is preferred.
Economics	English and Maths with a minimum grade B in at least one of these subjects
English Literature*	GCSE Grades (BC) in English & Maths
Geography	English, Maths and Geography with a minimum grade B in at least one of these subjects
Government & Politics*	GCSE Grades (C*C) in English & Maths
History*	GCSE Grades (BC) in English & Maths
Maths	GCSE Grade B Maths (Higher Tier)
Physics	Maths minimum grade B plus English grade C Double Award Science minimum grade BB or grade B in GCSE Physics
Media Studies*	GCSE Grades (C*C) in English & Maths
Psychology*	GCSE Grades (BB) in English & Maths
Religious Studies*	GCSE Grades (CCC) in English, Maths & Religious Studies
Sociology	GCSE Grades (C*C) in English & Maths
Spanish*	GCSE Grades (CCC*) in English, Maths & Spanish

**Please note:** These table lists are subject to change dependent on demand for subjects. Applicants hoping to take A-Level Science subjects on the Fast Track course should have prior experience of having studied at least one Science subject at A-Level.

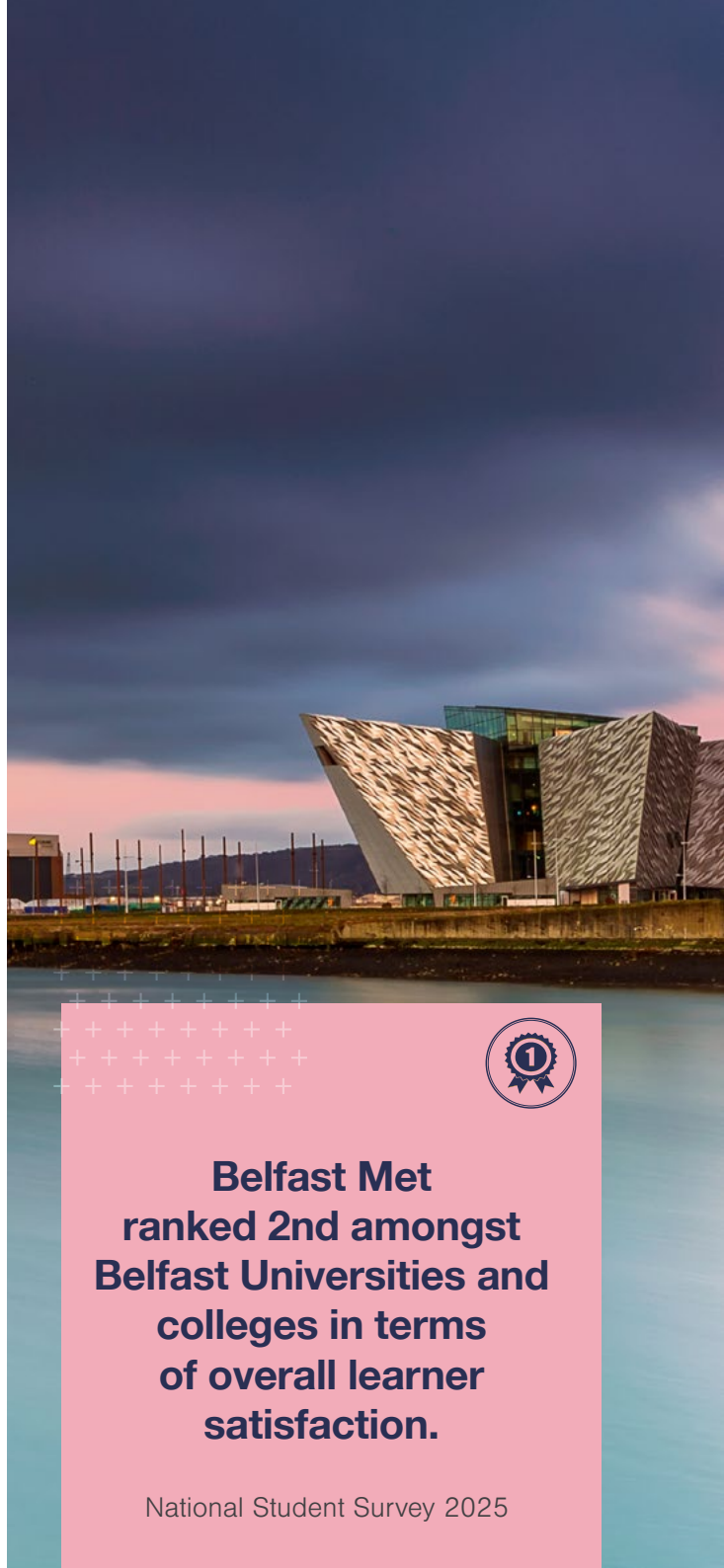


# Higher Education

**Belfast Met offers a selection of Higher Education courses at all levels, specifically tailored to industry demand and run in conjunction with top UK education providers.**

Our Higher Education partners include Queen's University Belfast, the Open University and Ulster University. We also offer a range of professional and technical awarding organisation programmes including the Institute of Leadership and Management, Chartered Institute of Personnel and Development, the Chartered Institute of Marketing and Pearson BTEC Higher Nationals.

As well as full degrees and foundation courses with our Higher Education partners, we offer a wide range of vocational courses and professional development, both full and part-time. All our Higher Education programmes face the same external checks and audits as a traditional university programme.



**Belfast Met  
ranked 2nd amongst  
Belfast Universities and  
colleges in terms  
of overall learner  
satisfaction.**

National Student Survey 2025

# Why choose Belfast Met?



## Choice

The widest range of courses available for Higher Education in Northern Ireland and you can apply for up to 5 courses without affecting your UCAS choices. (Please note some courses go through UCAS.)



## Cost

You will benefit from significantly lower costs than universities, which means less student debt in the future.



## Job opportunities

Our courses reflect industry demand, providing you with the skills you need to get the job you want.



## Location

With four main campuses in Belfast getting to classes is easier than ever, not to mention the great student nightlife.



## Graduation

All students studying at Level 4 and above may be eligible to graduate from Belfast Met at our ceremonies held in Titanic Belfast.

# Higher Education Entry Criteria

## Higher Education Course Entry Requirements (2026-27 academic year)

Each Higher Education programme has its own distinctive course entry requirements. This is set as a minimum UCAS points for entry. On some programmes, applicants must also hold subject specific qualifications to gain a place. Therefore, it is essential that applicants check entry requirements for each programme they are applying for. Please note, these are qualifications that applicants must have been completed and certified by the start date of the course to gain entry onto the respective programmes. Please note that in the event of undersubscription to a course, entry requirements may be lowered.

## English Language

There are minimum English Language requirements for full-time Higher Education programmes. Applicants must hold a GCSE pass at Grade C/4 or above in English Language. Level 2 Certificate in Essential Skills Literacy may be regarded as an acceptable alternative to GCSE English Language. The College may accept an equivalent level of qualification. Some courses may require higher than the minimum Grade C/4. You are advised to check the individual course entry requirements. You can find these within the Entry Requirements section under each individual course. Where a GCSE grade in English is specified as the only qualification accepted, other English competency qualifications may not apply. If you have not achieved GCSE English Language Grade C/4 or an equivalent level, you will be asked to provide evidence of English Language competency.

Other qualifications may be accepted as evidence of level of competency on a case-by-case basis. To provide evidence of English Language competency, please contact us on **028 90 265 265** or email: [studentportal@belfastmet.ac.uk](mailto:studentportal@belfastmet.ac.uk) You will be referred to the appropriate curriculum area who will guide you on your next steps.

Where an ESOL qualification is used, the appropriate level must be achieved across all skills - Reading, Writing, Speaking & Listening. Applicants should also check the English language criteria for progression to other further and higher education institutions as these may vary.

## Mathematics Entry Requirements

Applicants must hold a GCSE pass at Grade C/4 or above in Mathematics. Level 2 Certificate in Essential Skills - Application of Number and Essential Skills Numeracy may be regarded as an acceptable alternative to GCSE Maths.

Please note that the following courses are an exception to the Level 2 Mathematics requirement:

- Foundation Degree in Tourism, Hospitality and Events Management (Travel & Tourism Specialisms) Validated by University of Ulster
- Foundation Science Degree Tourism, Hospitality and Events Management (Events Specialisms) Validated by University of Ulster

Applicants should also check the mathematics criteria for progression to other further and higher education institutions as these may vary.

## Accreditation of Prior Learning (APL)

We recognise that prior learning or experience may give some students credit towards a qualification to gain entry onto a programme or credit towards a programme of study. Please refer to our Accreditation of Prior Learning (APL) process at: [APL Guidance Notes for HE Applicants](#)

## Important information

The College reserves the right to increase the entry requirements for all Higher Education provision before offers are made, to reflect required academic standards as specified by the Awarding Body/validating organisation. This will be clearly communicated in the entry requirements on course details page.

## International Qualifications

Belfast Met and University partners (UU, QUB and OU) must verify that applicants holding international qualifications meet course entry requirements before they can be enrolled onto a course.

To help us verify that course entry requirements are met, applicants must:

- Provide a full English language translation of your qualifications. Belfast Met will only accept the full English translation from [www.enic.org.uk](http://www.enic.org.uk), UK ENIC is the UK National Information Centre for the recognition and evaluation of international qualifications and skills.
- Ensure that the translation provides clear evidence that your qualifications meet or exceed the course entry requirements. UK ENIC can also help with Statements of Comparability and UK Qualification Reference Statements. There is a charge for this service.
- For more information on UK ENIC, visit their website at [www.enic.org.uk](http://www.enic.org.uk).
- The Department for Communities can also provide information and/ or help with qualification equivalencies. For more information, visit their website at: <https://www.communities-ni.gov.uk/>.

## Access NI/ SOSCARÉ

Admission to certain courses will be subject to satisfactory Access NI/criminal records and SOSCARÉ checks.

## Criminal Convictions Disclosure Policy

The College has a student Criminal Convictions Disclosure Policy therefore you must disclose criminal convictions when applying or enrolling onto a course. More information is available on our Student Criminal Disclosures webpage at [Student Criminal Disclosures](#) Failure to disclose will impact on your place at the College including work placements.

## Non-Academic course entry requirements

You must also ensure that you meet the following non-academic entry requirements:

- For courses running during academic year September 2026 – August 2027, you must be 16 years old by 1 July 2026 (born before 2nd July 2010).
- You must provide proof of your right to study in the UK. For courses with work placement, you must also provide proof of your right to work in the UK.
- You must provide photographic evidence of your identity.





# Higher Education Graduation

**Every autumn, our students are rewarded for their hard work and achievements at a prestigious Higher Education Graduation Ceremony held in the iconic Titanic Belfast.**

The special ceremony is followed by entertainment, refreshments and photography ensuring amazing memories from the day are captured.

So, what are you waiting for - take on a course at Belfast Met and soon you could be celebrating too!

For further information visit our website:

> [Graduation](#)





**All students  
studying  
courses Level  
4 or above may  
be eligible to  
graduate from  
Belfast Met.**





## Academic & Continuing Education

.....

The School of Academic and Continuing Education (ACE) at Belfast Met provides accessible, supportive learning pathways that promote inclusion, confidence, and independence. Students can study courses in literacy, numeracy, ESOL, employability, and academic qualifications from entry Level to Level 4 designed to remove barriers to education and open doors to the next step. Learners can progress to higher-level courses within Belfast Met, apprenticeships, vocational training, or employment, with tailored guidance at every stage to help them achieve their full potential.



[ace@belfastmet.ac.uk](mailto:ace@belfastmet.ac.uk)

# 94%

overall satisfaction amongst  
Higher Education learners.

Learner Satisfaction Survey 2025



## Full-time GCSE programme >

Level 2 Full-time GCSEs  
**GCSEs >**

## Full-time A Level programme >

Level 3 Fast Track A Level (Full-time)  
**A Level (AS/A2 Combined on one year) >**

Level 3 AS Level (Full-time)  
**A Level (First Year A Level) >**

Level 3 A2 Level (Full-time)  
**A Level (Second Year A Level) >**

## Access to University >

Access Diploma  
**History/English Literature (One Year Full-time) >**  
[Validated by Queen's University](#)

Access Diploma  
**Sociology/Psychology (One Year Full-time) >**  
[Validated by Queen's University](#)

Access Diploma  
**Sociology/Psychology (Two Year's Part-time) (Day) >**  
[Validated by Queen's University](#)

Access Diploma  
**Sociology/Psychology (Two Year's Part-time) (Evening) >**  
[Validated by Queen's University](#)

## Access to University >

Access Diploma  
**Maths and Physics (One Year Full-time) >**  
[Validated by Ulster University](#)

Access Diploma  
**Maths and Finance (One Year Full-time) >**  
[Validated by Ulster University](#)

Access Diploma  
**Computing for the Economy (One Year Full-time) >**  
[Validated by Ulster University](#)

Access Diploma  
**Computing for the Economy (Two Year's Part-time) (Day) >**  
[Validated by Ulster University](#)

## Certificate in Higher Education >

Level 4 Certificate in Higher Education  
**Combined Social and Behavioural Science (Day) >**  
[Validated by Ulster University](#)

Level 4 Certificate in Higher Education  
**Combined Social and Behavioural Science (Evening) >**  
[Validated by Ulster University](#)





## Skills & Apprenticeships

.....

**Belfast Met welcomes all those interested in developing a career through NI Traineeships, Apprenticeships and Higher Level Apprenticeships courses.**

Through these programmes you will develop the professional and technical skills and qualifications you need in college and out with an employer or on placement. This mixture of attending college for classes and gaining practical skills out in the 'world of work' will provide you with a valuable opportunity to learn, gain qualifications and make connections in industry.



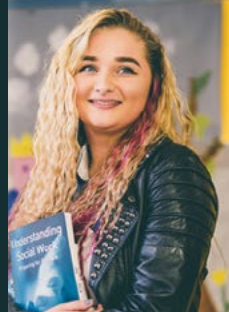
[apprenticeships@belfastmet.ac.uk](mailto:apprenticeships@belfastmet.ac.uk)



# 93%

**of learners agreed their course has developed knowledge & skills they need for the future.**

National Student Survey 2025



## NI Traineeships

NI Traineeships are open to all ages and normally take 2 years to complete, however some subject areas are offering a one year programme. Typically you will attend college and attend a placement activity however some subject areas may organise for you to attend a block placement for several weeks, as an alternative to a 1 day a week placement.

If you haven't already gained an equivalent qualification to a Grade C in maths and literacy, you will be required to attend additional classes to gain these qualifications.

On successful completion of the NI Traineeship programme, you will have gained a Level 2 qualification and be able to progress to an Apprenticeship or further education at Level 3. If during your traineeship programme you manage to secure employment you will be able to transfer to an apprenticeship and continue to complete your vocational programme of study.

## Apprenticeships NI

Apprenticeship programmes are offered at Level 2 and Level 3 and usually take around 2 years to complete.

You will have found an employer willing to employ you for a minimum of 21 hours a week. The employer then releases you to attend college classes on your chosen subject and if required, for maths, literacy and ICT. Typically, you are with your employer for 4 days a week and attend college on one day a week.

## Higher Level Apprenticeships

Higher Level Apprenticeships cover Levels 4 to 6, You will have found an employer willing to employ you for a minimum of 21 hours a week. The employer then releases you to attend college classes on your chosen programme.

The following pages list all the subject areas we offer, together with links that will take you to the associated school for further details on the specific subjects and entry criteria.

If you have any queries on these programmes please email: [apprenticeships@belfastmet.ac.uk](mailto:apprenticeships@belfastmet.ac.uk)

## Traineeships >

Level 2 Diploma (Traineeship)

**Animal Care >**

Level 2 Certificate (Traineeship)

**Applied Science >**

Level 2 (Traineeship)

**Bakery >**

Level 2 (Traineeship)

**Barbering >**

Level 2 (Traineeship)

**Beauty Therapy >**

Level 2 Diploma (Traineeship)

**Bricklaying >**

Level 2 (Traineeship)

**Business Studies >**

Level 2 Certificate (Traineeship)

**Cabin Crew and Ground Operations >**

Level 2 Diploma (Traineeship)

**Carpentry & Joinery (Castlereagh) >**

Level 2 Diploma (Traineeship)

**Carpentry & Joinery (Millfield) >**

Level 2 Diploma (Traineeship)

**Childcare (1 Year) >**

Level 2 Diploma (Traineeship)

**Childcare (2 Year) >**

Level 2 Diploma (Traineeship)

**Creative Media >**

Level 2 Diploma (Traineeship)

**Engineering >**

Level 2 (Traineeship)

**Fashion & Textiles >**

Level 2 Diploma (Traineeship)

**Hairdressing >**

Level 2 (Traineeship)

**Hair and Media Make-up >**

Level 2 Diploma (Traineeship)

**Health and Social Care (1 Year) >**

Level 2 Diploma (Traineeship)

**Health and Social Care (2 Year) >**

Level 2 Diploma (Traineeship)

**Hospitality >**

Level 2 Diploma (Traineeship)

**Information Technology >**

Level 2 Diploma (Traineeship)

**Motor Vehicle (Castlereagh) >**

Level 2 Diploma (Traineeship)

**Motor Vehicle (Millfield) >**

Level 2 (Traineeship)

**Music Industry Skills >**

Level 2 (Traineeship)

**Nail Treatments >**

Level 2 (Traineeship)

**Plumbing & Heating >**

Level 2 (Traineeship)

**Professional Chef >**

Level 2 Diploma (Traineeship)

**Travel and Tourism >**

## Apprenticeships NI >

Level 2 (Apprenticeship)

**Bricklaying >**

Level 2 (Apprenticeship)

**Business Administration >**

Level 3 (Apprenticeship)

**Business Administration >**

Level 2 Diploma (Apprenticeship)

**Carpentry & Joinery (Castlereagh) >**

**Carpentry & Joinery (Millfield) >**

Level 3 Diploma (Apprenticeship)

**Carpentry & Joinery (Castlereagh) >**

**Carpentry & Joinery (Millfield) >**

Level 2 (Apprenticeship)

**Childcare (Evening) >**

Level 3 (Apprenticeship)

**Childcare (Evening) >**

Level 3 (Apprenticeship)

**Civil Engineering >**

Level 3 (Apprenticeship)

**Electronic Fire & Security Systems >**

Level 3 (Apprenticeship)

**Electrotechnical >**

Level 2 (Apprenticeship)

**Engineering >**

Level 3 (Apprenticeship)

**Engineering >**

Level 3 (Apprenticeship)

**ILM Diploma in Management >**

Level 2 Diploma (Apprenticeship)

**Motor Vehicle (Castlereagh) >**

**Motor Vehicle (Millfield) >**

Level 2 (Apprenticeship)  
**Plumbing >**

---

Level 2 (Apprenticeship)  
**Providing Financial Services >**

---

Level 3 (Apprenticeship)  
**Providing Financial Services >**

---

Level 2 Diploma (Apprenticeship)  
**Pharmacy Services >**

---

Level 3 Diploma (Apprenticeship)  
**Pharmacy Services >**

---

Level 2 (Apprenticeship)  
**Professional Chef >**

---

Level 3 (Apprenticeship)  
**Professional Chef >**

---

Level 3 Diploma (Apprenticeship)  
**Applied Science >**

---

Level 2 (Apprenticeship)  
**ILM Team Leading >**

---

Level 3 Apprenticeship  
**IT Networking Infrastructure >**

---

## Higher Level Apprenticeships >

Level 5 Higher Level Apprenticeship  
**Accountancy >**

---

Level 6 Higher Level Apprenticeship  
**Accounting Technology (Top-up Degree) >**  
[Validated by The Open University](#)

---

Level 5 Higher Level Apprenticeship  
**HND in Business >**

---

Level 5 Higher Level Apprenticeship  
**Leadership for Children's Care Learning and Development (Management) >**

---

Level 5 Higher Level Apprenticeship  
**Civil Engineering >**  
[Validated by Ulster University](#)

---

Level 5 Higher Level Apprenticeship  
**Culinary Arts >**  
[Validated by The Open University](#)

---

Level 5 HLA Foundation Science Degree  
**Tourism, Hospitality and Events Management with Hospitality Specialism >**  
[Validated by Ulster University](#)

---

Level 5 HLA Foundation Science Degree  
**Tourism, Hospitality and Events Management with Events Specialism >**  
[Validated by Ulster University](#)

---

Level 5 Higher Level Apprenticeship  
**Cyber Security with Cloud and Network Infrastructure >**  
[Validated by The Open University](#)

---

Level 6 BSc (Hons) Higher Level Apprenticeship  
**Cyber Security with Cloud and Network Infrastructure (Top-Up) >**  
[Validated by The Open University](#)

---

Level 5 Higher Level Apprenticeship  
**Software and Cloud Development with Data Analysis >**  
[Validated by The Open University](#)

---

Level 6 BSc (Hons) Higher Level Apprenticeship  
**Software and Cloud Development with Data Science (Top-Up) >**  
[Validated by The Open University](#)

---

Level 5 Higher Level Apprenticeship  
**Marketing >**  
[Validated by Ulster University](#)

---





.....

**The Belfast Business School delivers a wide-ranging curriculum, which is aligned to the needs of the local economy. We are developing future leaders in marketing, business, accounting, hospitality, tourism and events. Our focus is on in-depth, real world knowledge and transferable skills as demanded by industry.**



**[bbsinfo@belfastmet.ac.uk](mailto:bbsinfo@belfastmet.ac.uk)**



96

**of learners agreed they were learning skills that would help them in real life.**

Learner Satisfaction Survey 2025



## Accountancy >

Level 5 Higher Level Apprenticeship  
**Accountancy >**

---

Level 5 Foundation Science Degree  
**Accounting >**  
[Validated by Ulster University](#)

---

Level 6 Higher Level Apprenticeship  
**Accounting Technology >**  
[Validated by The Open University](#)

---

## Administration >

Level 3 Diploma  
**Business Administration Skills >**

---

## Business >

Level 2 (Traineeship)  
**Business Studies >**

---

Level 3 National Extended Diploma  
**Business >**

---

Level 5 Higher National Diploma  
**Business >**

---

Level 5 Higher Level Apprenticeship  
**HND in Business >**

---

## Marketing >

Level 5 Higher Level Apprenticeship  
**Marketing >**  
[Validated by Ulster University](#)

---

Level 5 Foundation Degree  
**Marketing >**  
[Validated by Ulster University](#)

---

## Travel and Tourism and Events >

Level 2 Certificate (Traineeship)  
**Cabin Crew and Ground Operations >**

---

Level 2 Diploma (Traineeship)  
**Travel and Tourism >**

---

Level 3 Extended Diploma  
**Travel and Tourism >**

---

Level 3 Extended Diploma  
**Events with Travel and Tourism >**

---

Level 5 Foundation Science Degree  
**Tourism, Hospitality & Events Management with Specialisms >**

---

Level 5 Higher Level Apprenticeship  
**Event Management Specialism >**  
[Validated by Ulster University](#)

---

Level 5 Foundation Science Degree  
**Event Management Specialism >**  
[Validated by Ulster University](#)

---

Level 5 Foundation Degree  
**Travel Specialism >**  
[Validated by Ulster University](#)

---

## Hair, Beauty & Barbering >

Level 1  
**Barbering >**

---

Level 2 Diploma (Traineeship)  
**Barbering >**

---

## Hair, Beauty & Barbering >

Level 3 NVQ Diploma

**Barbering >**

Level 1

**Beauty & Nails >**

Level 2 Diploma (Traineeship)

**Beauty Therapy >**

Level 2 Diploma (Traineeship)

**Nail Treatments >**

Level 3 Diploma

**Beauty Therapy Massage >**

Level 1

**Hairdressing >**

Level 2 Diploma (Traineeship)

**Hairdressing >**

Level 3 Diploma

**Hairdressing >**

Level 2 Diploma (Traineeship)

**Hair and Media Make-up >**

Level 3 Diploma

**Hair and Media Make-up >**

Level 5 Diploma

**Hair and Beauty Management (General) >**

## Bakery >

Level 2 Diploma (Traineeship)

**Bakery >**

## Hospitality >

Level 1 Certificate

**Hospitality >**

Level 2 Diploma (Traineeship)

**Hospitality >**

Level 3 Diploma

**Hospitality >**

Level 3 Diploma

**Food and Beverage Service Supervision >**

Level 5 Higher Level Apprenticeship

**Hospitality Specialism >**

[Validated by Ulster University](#)

## Professional Cookery >

Level 2 Diploma (Traineeship)

**Professional Chef >**

Level 2 Diploma (Apprenticeship)

**Professional Chef >**

Level 3 Diploma (Apprenticeship)

**Professional Chef >**

## Culinary Arts >

Level 5 Higher Level Apprenticeship

**Culinary Arts >**

[Validated by The Open University](#)







**Creative &  
Digital Industries**

.....

**From Fashion and Visual Effects to Graphic Design  
and Music, our school combines artistry with cutting  
edge technology, as well as providing the tools to  
succeed within the tech and creative industries.**



**[creativedigital@belfastmet.ac.uk](mailto:creativedigital@belfastmet.ac.uk)**

96

**of learners agreed their  
course was preparing them  
well for a future career.**

Learner Satisfaction Survey 2025



## Art and Design >

Level 1

**Art and Design >**

---

Level 3 National Extended Diploma

**Art and Design Practice >**

---

Level 3 Foundation Diploma

**Art, Design and Media Practice >**

---

## Visual Effects > & Animation

Level 3 Extended Diploma

**Creative Media Practice (Visual Effects) >**

---

Level 3 Extended Diploma

**Creative Media Practice (Digital Art and Animation)**

---

Level 5 Foundation Degree

**Digital Art & Animation for Visual Effects (VFX) and Virtual Production >**

[Validated by The Open University](#)

---

## Cyber Security/ Cloud Computing/ Networking >

Level 3 Extended Diploma

**IT infrastructure Technician (Cyber Security) >**

---

Level 3 Apprenticeship

**IT Networking Infrastructure >**

---

Level 5 Higher Level Apprenticeship

**Cyber Security with Cloud and Network Infrastructure >**

[Validated by The Open University](#)

---

Level 5 Foundation Degree

**Cyber Security with Cloud and Network Infrastructure >**

[Validated by The Open University](#)

---

Level 6 BSc (Hons) Degree

**Cyber Security with Cloud and Network Infrastructure >**

[Validated by The Open University](#)

---

Level 6 BSc (Hons) Degree Higher Level Apprenticeship

**Cyber Security with Cloud and Network Infrastructure >**

[Validated by The Open University](#)

---

## Software & Cloud Development with Data Analysis >

Level 3 Extended Diploma

**Application Data Practitioner**

**(Software Development Techniques-Web, App,Cloud) >**

---

Level 3 Apprenticeship

**IT Software Development >**

---

Level 5 Foundation Degree

**Software and Cloud Development with Data Analysis >**

[Validated by The Open University](#)

---

Level 5 Higher Level Apprenticeship

**Software and Cloud Development with Data Analysis >**

[Validated by The Open University](#)

---

Level 6 BSc (Hons) Degree

**Software and Cloud Development with Data Science (Full-time) >**

[Validated by The Open University](#)

---

Level 6 BSc (Hons) Degree

**Software and Cloud Development with Data Science (Part-time) >**

[Validated by The Open University](#)

---

Level 6 BSc (Hons) Higher Level Apprenticeship

**Software and Cloud Development with Data Science >**

[Validated by The Open University](#)

---

## Electronics and Industrial Automation >

Level 3 Extended Diploma

**Electrical/Electronic Engineering >**

---

Level 5 Higher National Diploma

**Electrical/Electronic Engineering) >**

---

Level 5 Higher National Diploma

**Electrical & Electronic Engineering (Part-time) >**

---

## Software Engineering & Computing >

Level 2 Diploma (Traineeship)

**Information Technology >**

---

Level 3 Extended Diploma

**IT (Applications and Software Development) >**

---

Level 5 Higher National Diploma

**Computing (Software Engineering) with Forensics, Security & Networking >**

---

Level 5 Foundation Degree

**Computing (Software Engineering) >**

[Validated by Ulster University](#)

---

Level 5 Foundation Degree

**Computing (Software Engineering) with Cyber, Mobile Development & Artificial Intelligence >**

[Validated by Ulster University](#)

---

## Film, TV and Cinematography >

Level 3 National Extended Diploma

**Creative Media Practice (TV and Film) >**

---

Level 5 Foundation Degree

**Commercial Photography & Cinematography >**

[Validated by The Open University](#)

---

Level 5 Foundation Degree

**Film Production >**

[Validated by The Open University](#)

---

Level 5 Foundation Degree

**Screen Acting and Producing >**

[Validated by The Open University](#)

---

## Fashion >

Level 2 (Traineeship)

**Fashion & Textiles >**

---

Level 3 National Extended Diploma

**Art and Design Practice - Fashion and Clothing >**

---

Level 6 BSc (Hons) Degree

**Fashion Production and Business >**

[Validated by The Open University](#)

---

## Game Development >

Level 2 (Traineeship)

**Creative Media >**

---

Level 3 Extended Diploma

**Creative Media Practice (Game Development) >**

---

Level 3 Extended Diploma

**Creative Media Practice (Game Art & Design) >**

---

Level 5 Foundation Degree

**Game Art, Design and Development >**

[Validated by The Open University](#)

---

## Graphic Design >

Level 3 Extended Diploma

**Creative Media Practice (Graphic Design) >**

---

Level 5 Foundation Degree

**Graphic Design and Illustration >**

[Validated by The Open University](#)

## Information Technology >

Level 2 Diploma (Traineeship)

**Information Technology >**

---

Level 3 Extended Diploma

**IT (Cyber Security/Networking)**

---

Level 3 Extended Diploma

**IT (Software & Website Development) >**

---

Level 3 Extended Diploma

**IT (Software Development, Game Design and IOE Applications) >**

---

Level 3 Apprenticeship

**IT >**

## Media >

\*Pearson BTEC Level 1 Introductory Diploma

**Digital Media >**

*\*Delivered by the School of Health,  
Wellbeing and Inclusion*

---

Level 5 Foundation Degree

**Journalism and Documentary Production >**

[Validated by The Open University](#)

## Music >

Level 2 (Traineeship)

**Music Industry Skills >**

---

Level 3 National Extended Diploma

**Music (Performance) >**

---

Level 3 National Extended Diploma

**Music (Production) >**

---

Level 5 Foundation Degree

**Music and Sound for Digital Arts  
(Performance and Production) >**

[Validated by The Open University](#)

## Esports >

Level 3 National Diploma

**Esports >**

---

Level 5 Foundation Degree

**Esports (Part-time) >**



## Health, Wellbeing & Inclusion

Our courses equip students with specialist knowledge, skills and qualifications recognised for employment in the Health and Social Care, Allied Health Care, Children's Care and Education and Sport and fitness industries. Our course teams have extensive industry and professional experience in their fields and courses include applied learning, such as a work placement and project-based learning. This makes the learning relevant and supports career development as well as academic progress. The School also delivers an extensive range of accredited full and part time courses tailored to the needs and interests of young people and adults with special educational needs and learning disabilities.



[hcsinfo@belfastmet.ac.uk](mailto:hcsinfo@belfastmet.ac.uk)



# 97%

of learners felt part  
of a diverse & inclusive  
culture at Belfast Met.

Learner Satisfaction Survey 2025





## Childcare, Childhood Studies >

Level 2 - Traineeship

**Childcare (1 Year) >**

Level 2 Diploma (Traineeship)

**Childcare (2 Year) >**

Level 2 Apprenticeship

**Childcare >**

Level 2

**Childcare - Early Years (Part-time) >**

Level 3

**Childcare - Early Years (Part-time) >**

Level 3 Apprenticeship

**Childcare (Evening) >**

Level 3 Diploma/Extended Diploma

**Childcare >**

Level 5 Diploma

**\*Children's Care Learning and Development in Leadership (Management) (Part-time) >**

Level 5 Higher Level Apprenticeship

**\*\*Children's Care Learning and Development in Leadership (Management) (Part-time) >**

Level 5 Foundation Degree

**Early Childhood Studies (Full-time) >**

[Validated by Queen's University Belfast in partnership with Stranmillis University College](#)

[View details](#)

Level 5 Foundation Degree

**Early Childhood Studies (Part-time) >**

[Validated by Queen's University Belfast in partnership with Stranmillis University College](#)

## Teaching Assistant >

Level 3 Diploma

**Childcare - Classroom/Teaching Assistant >**

Level 3 Diploma

**Childcare - Classroom/Teaching Assistant (Part-time) >**

## Counselling >

Level 2 Certificate

**Counselling Skills (Part-time) (Day) >**

Level 3 Certificate

**Counselling Studies (Part-time) (Day) >**

Level 3 Certificate

**Counselling Studies (Part-time) (Evening) >**

Level 4 Certificate

**Counselling Studies (Part-time) >**

[Validated by Ulster University](#)

Level 4 Certificate

**Counselling Studies (Part-time) (Evening) >**

[Validated by Ulster University](#)

Level 5 Foundation Degree

**Integrative Counselling Practice (Part-time) >**

[Validated by Ulster University](#)

\* Funding may be available | \*\* Full funding available

## Health and Social Care >

NCFE Level 1 Diploma

**Introduction to Health and Social Care for Adults >**

Level 2 Diploma (Traineeship)

**Health and Social Care (1 Year) >**

Level 2 Diploma (Traineeship)

**Health and Social Care (2 Year) >**

Level 3 National Extended Diploma

**Health and Social Care (3 A-Level Equivalent) >**

Pearson Level 4 Higher National Certificate

**Health and Social Care Practice >**

Pearson Level 4 Higher National Certificate

**Health and Social Care Practice (Part-time) (Evening) >**

Pearson Level 4 Higher National Certificate

**Health and Social Care Practice**

**(Social & Community Work) >**

Level 4 Certificate in Higher Education

**Healthcare Practice >**

[Validated by The Open University](#)

Level 4 Higher National Certificate

**Healthcare Science (Nursing) >**

Level 6 BSc (Hons) Degree

**Social Work >**

[In collaboration with Ulster University](#)

## Public Services >

Level 3 Diploma

**Public Services/Uniformed Protective Services >**

## Sports Academy >

**Sports Academy - Boxing >**

**Sports Academy - Football >**

**Sports Academy - Athlete Development Programme >**

## Sport >

Level 1 Diploma

**Pearson BTEC Level 1 in Sport >**

Level 3 National Extended Diploma

**Sport and Exercise Science >**

Level 3 National Extended Diploma

**Sport Coaching and Development >**

Level 5 Foundation Degree

**Physical Education and Sport >**

[Validated by Queen's University Belfast in partnership with Stranmillis University College](#)

Pearson Level 4 Higher National Certificate

**Sport and Exercise Science >**

Level 5 Foundation Degree

**Sports Coaching and Performance Analysis >**

[Validated by The Open University](#)

## Sports Massage Therapy >

Level 3 Active IQ Diploma

**Sports Massage Therapy (Part-Time) (Day) >**

Level 3 Active IQ Diploma

**Sports Massage Therapy (Part-Time) (Evening) >**

Level 4 Active IQ Diploma

**Sports Massage Therapy (Part-Time) >**

## Gym Instructing and Personal Training >

Level 3 Active IQ Diploma

**Gym Instructing and Personal Training (Millfield) >**

Level 3 Active IQ Diploma

**Gym Instructing and Personal Training (Titanic Quarter) >**

## Supported Learning >

**Level 1 Pathfinder >**

**Entry Level 1/3 Independence for Life and Work >**

**Level 1 Skills for Employment >**

**Entry Level 3 Positive Action >**





Science, Engineering  
& Construction

Belfast Met has acquired the prestigious STEM assured status, guaranteeing a stellar standard in science, technology, engineering and maths. Our offering is designed with the help of employers and delivered by teams with years of industry experience.



[scienceengconstruction@belfastmet.ac.uk](mailto:scienceengconstruction@belfastmet.ac.uk)

95%

of learners would  
recommend Belfast Met to  
their family or friends.

Learner Satisfaction Survey 2025



## Alarms >

Level 3 Diploma

**Electronic Fire & Security Systems Apprenticeship >**

## Animal Care >

Level 2 Diploma (Traineeship)

**Animal Care >**

## Animal Management >

Level 3 National Extended Diploma

**Animal Management >**

Level 4 Higher National Certificate

**Animal Management (Animal Science) >**

## Architectural Technology >

Level 5 Foundation Degree

**Architectural Technology >**

[Validated by Ulster University](#)

## Bricklaying >

Level 2 Diploma (Apprenticeship/Traineeship)

**Bricklaying >**

## Construction and the Built Environment >

Level 3 National Extended Diploma

**Construction and the Built Environment >**

Level 5 Foundation Degree

**Construction Engineering with Surveying >**

[Validated by Ulster University](#)

## Civil Engineering >

Level 3 National Diploma (Apprenticeship)

**Civil Engineering >**

Level 3 National Extended Diploma

**Civil Engineering >**

Level 5 Higher Level Apprenticeship

**Civil Engineering >**

[Validated by Ulster University](#)

Level 5 Foundation Degree

**Civil Engineering >**

[Validated by Ulster University](#)

## Electrotechnical >

Level 3 Apprenticeship

**Electrotechnical >**

## Engineering >

Level 2 Diploma (Apprenticeship/Traineeship)

**Engineering >**

Level 3 Diploma (Apprenticeship)

**Engineering >**

Level 5 Foundation Degree

**Mechanical Engineering >**

[Validated by Queens University Belfast](#)



## Carpentry and Joinery >

Level 2 Diploma (Apprenticeship/Traineeship)  
**Carpentry & Joinery (Millfield) >**

---

Level 2 Diploma (Apprenticeship/Traineeship)  
**Carpentry & Joinery (Castlereagh) >**

---

Level 3 Diploma  
**Joinery (Millfield) >**

---

Level 3 Diploma  
**Joinery (Castlereagh) >**

---

## Motor Vehicle >

Level 2 Diploma (Apprenticeship/Traineeship)  
**Motor Vehicle (Millfield) >**

---

Level 2 Diploma (Apprenticeship/Traineeship)  
**Motor Vehicle (Castlereagh) >**

---

## Plumbing >

Level 2 Diploma (Apprenticeship/Traineeship)  
**Plumbing & Heating >**

---

## Property Housing and Planning >

Level 5 Foundation Degree  
**Property, Housing and Planning >**  
[Validated by Ulster University](#)

## Sciences >

Level 2 Certificate (Traineeship)  
**Applied Science >**

---

Level 2 Diploma (Apprenticeship)  
**Pharmacy Services >**

---

Level 3 Diploma (Apprenticeship)  
**Pharmacy Services >**

---

Level 3 Diploma (Apprenticeship)  
**Applied Science >**

---

Level 3 National Extended Diploma  
**Biomedical Science >**

---

Level 4 Higher National Certificate  
**Applied Biology >**

---

Access Diploma (One year)  
**Biological/Biomedical Science >**  
[Validated by Queens University Belfast](#)

---

Access Diploma (Two Years)  
**Biological/Biomedical Science >**  
[Validated by Queens University Belfast](#)

---

Level 5 Foundation Degree  
**Biological Sciences >**  
[Validated by Queens University Belfast](#)

---

Level 5 Foundation Degree  
**Biomedical Sciences >**  
[Validated by Queens University Belfast](#)



# Fees and Support

**Tuition fees are payable in full at the time of enrolment. Payment is accepted online via Worldpay, or by cash, direct debit, or credit card.**

## **Direct Debit**

Students can arrange for fees to be paid by direct debit if their course is of at least 16 weeks duration and the total cost is greater than £200, with students paying a minimum of 25% of the total fee upfront, followed by three equal monthly payments by direct debit. Fully completed Direct Debit Forms must be provided at time of enrolment.

## **Payment by Sponsor or Employer**

Please provide all information that will enable us to raise any appropriate invoices and allow your sponsor to pay on your behalf. Please bring a letter to your enrolment confirming their intention to pay your fees. It remains your personal responsibility to ensure your fees are paid.

## **Refund Policy**

The College policy is that all tuition fees are paid in full and are not refundable. The exceptions are as follows:

- A course is cancelled by the College, in this case students will be Offered either a place on an alternative course, or full refund.
- If the time, day or evening of the class has been changed and the student is unable to continue attending because of these changes.
- Other applications shall be considered only in exceptional circumstances by a member of the College Directorate or Head of Finance.
- All applications must be in writing to the Finance Department.
- Where a refund had been authorised the student will be refunded within 20 working days.

## **Student Loans Company**

If your fees are to be paid by the Student Loan Company (SLC), then, at time of enrolment, you must present a letter from SLC confirming they will pay the fees, or evidence that you have applied for funding. Otherwise, you will pay fees at time of enrolment. Please note that if you withdraw before completing your course, SLC will not pay your tuition fees in full. You will be expected to pay the balance in this case.





# Student Funding Information

The following information provides a brief overview of the various funding opportunities that may be available for Full-time courses at Belfast Met.

## EMA

Students aged between 16 and 19 on or between 2 July 2025 and 1 July 2026 and studying a Full-time Further Education course may be eligible to receive £30 per week. This is a means-tested award based on household income.

## Travel Pass

Students aged under 19 on 1 July 2026, studying a Full-time Further Education course and living at least three Miles from the College, with no closer College offering a similar course, may be eligible for a travel award.

## Care to Learn Scheme

Students aged between 16 and 19 who have care of a child may be eligible to receive assistance with childcare and travel costs under this scheme.

## Further Education Grant Full-time

Students must be 19 or over on 1 July 2026. This is a means-tested award for Full-time Further Education students up to a maximum of £2,092.

## Please Note:

**Applications for the Further Education Award usually open in April and close at the end of October 2026.**

## Further Education Grant Childcare

Students must be 20 or over by the start of their course and eligible for the Further Education Award Full-time or Part-time. The Award provides funding towards childcare costs; however, applicants must indicate that they require childcare support when completing their Further Education grant application.

## Higher Education Full-time

Students undertaking HNDs, Degrees and Foundation Degrees may seek financial support from Student Finance NI for the following: Tuition Fee loan, Maintenance loan, Maintenance grant. Additional support may be available e.g. Parents' Learning Allowance, Disabled Students Allowance.

## Higher Education Bursary

This is a Belfast Met Bursary that may be awarded to students who have applied to Student Finance NI for assistance; consented to share their financial information with a third party; and who meet all other criteria as set by the College.

## Higher Education Full-time Childcare Grant

Students on a Full-time Higher Education Course may seek financial support for childcare costs through Student Finance NI. For more information, please visit Student Finance NI's website: [www.studentfinanceni.co.uk](http://www.studentfinanceni.co.uk)



### **Further Information:**

For further information regarding potential sources of funding, please contact the Student Funding Team on tel:

**028 9026 5183** or email  
**[studentfunding@belfastmet.ac.uk](mailto:studentfunding@belfastmet.ac.uk)**

For further information and criteria relating to each of the funds listed above:

**[www.belfastmet.ac.uk/student-funding](http://www.belfastmet.ac.uk/student-funding)**

### **Please Note:**

**Students eligible for both Further Education Grant and EMA cannot receive both.**

This information is correct as of November 2025, but is subject to change in line with Government guidelines.



# Student Funding Information

**Full-time students applying for a first degree or HND or equivalent should apply for financial help through Student Finance NI who will carry out the financial assessment. This will decide how much funding is available to you. You may be eligible to receive the following:**

## **Tuition Fees and Charges 2026/27**

Most of our full-time foundation degree/HND's will cost £3,235 per year, with the exception of Queen's University Belfast Foundation Degree which will cost £3,323 per year. The BSc Social Work Degree £4,985 per year, subject to formal notification from the Department for the Economy.

All eligible Northern Ireland students studying full-time can get a loan to meet their course costs. The loan is paid directly to the College on your behalf.

This loan does not have to be repaid until you are earning more than £24,990 per annum and you pay 9% of your income over the threshold.

If you choose not to take a tuition fee loan you will have to pay for your tuition at the time of enrolment.

## **Maintenance Loan**

The amount you can get depends on where you'll be living during term-time. It is also affected by your income and that of your parents or partner.

Your living arrangements during term-time	Maximum Maintenance Loan available
Living with your parents	£5,250
Living in your own home and studying outside London	£6,776

## **Maintenance Grant**

The Maintenance Grant is based on your household income. If it's £41,065 or less, you'll be eligible to receive all or some of the support.

The amount you can get depends on your income and that of your parents or partner. The amount available is the same for both grants.

Total annual household income	Amount available
£19,203 or less	Full grant, £3,475
Between £19,204 and £41,065	Partial grant
Over £41,065	No grant

**Further Education Grants**

Further Education Grants for those 19 years of age or over on 1st July prior to the start of your course in September available for the academic year 2026/2027. Further Education Grants range in value from £2,092 down to £1,402 depending on household income.

Applications are usually released after Easter 2026. Applications for this fund close at the end of October 2026 however eligible students who submit an application by 30th June 2026 will be guaranteed funding for the 2026/27 academic year.

Household Income	Amount of Grant if living at parent's home	Amount of Grant if living away from parent's home
Up to £21,330	£1,674	£2092
£21,331 - £26,160	£1,490	£1,863
£26,161 - £31,580	£1,306	£1,633
£31,581 - £38,805	£1,122	£1,402
£38,806 and over	No Funding	No Funding

For more information/criteria or detail of how to apply:  
[www.eani.org.uk/fegrants](http://www.eani.org.uk/fegrants)

**Learner Support Fund**

The Learner Support Fund is a grant available to students studying FE or HE who have exhausted all other available sources and find themselves in financial difficulty. Students that apply to the Learner Support Fund and meet the means test and the eligibility criteria can be assessed under the following categories:

Funding Category	Full-time	Part-time
Fee Assistance	Yes	Yes
Living costs associated with learning	Yes	No
Travel assistance	Yes	Yes
Books and Equipment Costs	Yes	Yes
Childcare	Yes	Yes

Students cannot be double funded for the same category. If a student is in receipt of Fee support from Student Finance NI, the Learner Support Fund will be unable to assist further under that category.

Applications will be available from September 2026. For more information or full criteria contact:  
[studentfunding@belfastmet.ac.uk](mailto:studentfunding@belfastmet.ac.uk) or 028 9026 5183.

**Please Note:**This information is correct as of December 2025, but is subject to change in line with Government guidelines.

# Applying to Belfast Met

## Need help?

How to apply? Password reset? Evidence upload? What happens next?

Contact **02890 265 265** or email: [studentportal@belfastmet.ac.uk](mailto:studentportal@belfastmet.ac.uk)

## Application Process

01

- Look at courses available
- Check out all the information on course details pages
- Talk to our Careers & Employability Team

02

- Apply for up to 5 courses using online application facility
- Upload evidence of qualifications achieved and right to study / identity
- Download Engage app to stay up-to-date

03

- Pre-entry advice stage
- Stay in contact to move to next stage
- Assessments / interviews may be required depending on course
- Ensure email address and phone numbers are up-to-date

04

- Offer holders must accept or reject within 5 working days
- Ensure email address and phone numbers are up-to-date
- Follow instructions contained in emails

05

- Update pending to achieved qualification grades
- Offer holders – attend enrolment appointment
- Waiting list – follow instructions in emails

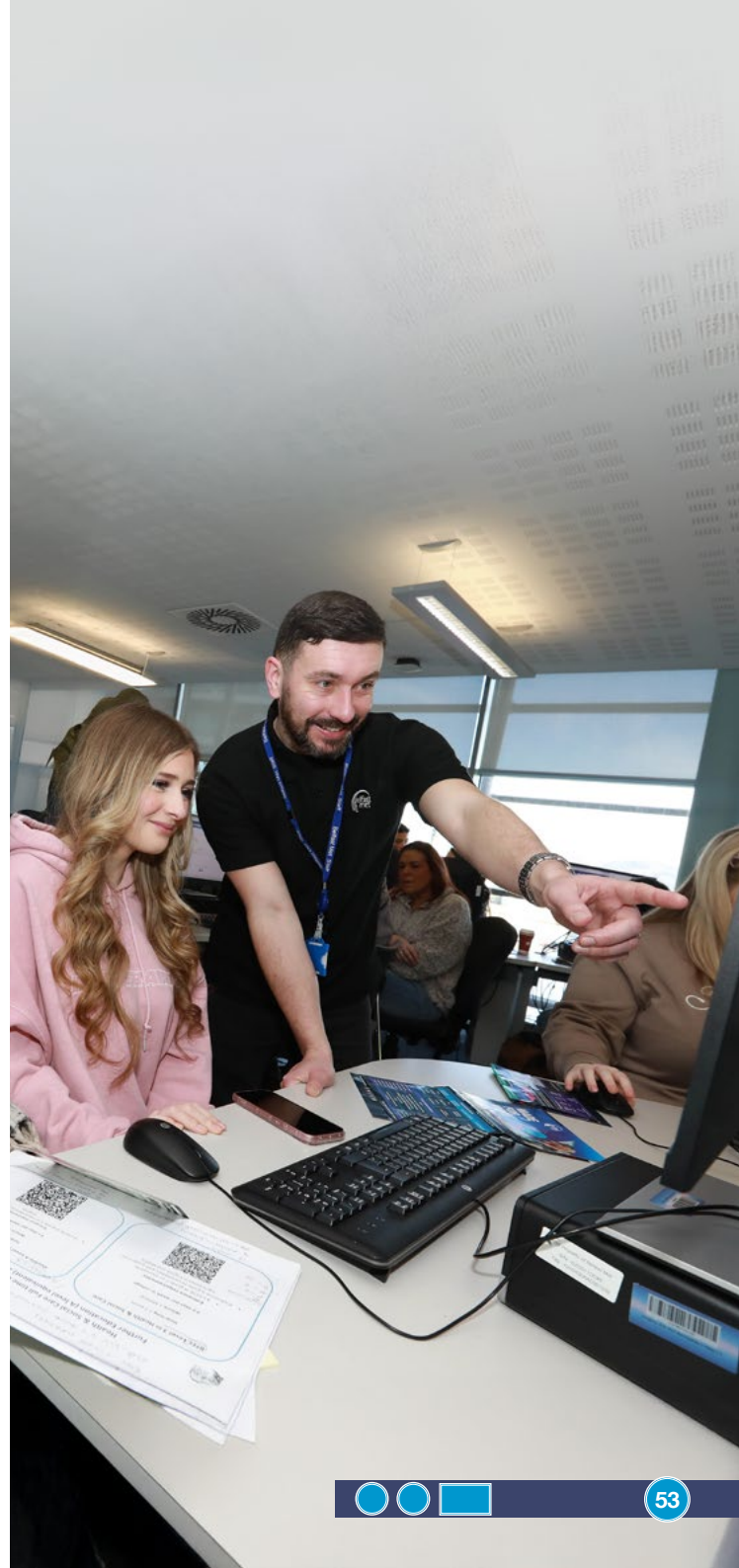
## Remember!

- Applications stay open until course there are no places left on the course.
- Offers are made based on number of places currently available.
- The earlier you apply increases the chances of getting onto your first choice.
- If place becomes available, applicants on waiting lists will be contacted.

### Student Loans Company

Talk to us if you need extra support to apply or if you are attending Open Days, pre-entry advice sessions, assessments, or enrolment appointments.

Please telephone or email using the contact details shown on our communications to you. Alternatively, telephone **028 90265 265** or email: [studentportal@belfastmet.ac.uk](mailto:studentportal@belfastmet.ac.uk)





## Pre-Entry Advice

Pre-Entry Advice Sessions allow you to:

1. Find out more about the course.
2. Ask any questions you may have.
3. Make sure that you have applied to the correct Level and subject area.
4. Transfer to a more suitable course if you need to.

Pre-Entry Advice Sessions will take place on one of our campuses or as an online meeting. Some courses may also send you some Pre-Entry materials, e.g. a course information video.

Please follow all instructions you receive about Pre-Entry Advice to make sure you can progress to the next stage of your application.

## Belfast Met Engage App

You can keep track of your application using your online account. You can also download the Belfast Met 'Engage' app to track your application(s) and receive notifications throughout your application process.

The app is available via Google Play and the Apple App Store.

### Scan to View Online



9:41



Belfast Met Engage

# Information for Applicants 2026

## Promoting Equality and Diversity

Belfast Metropolitan College believes that everyone has a right to study in a harmonious welcoming environment. We are committed to creating and ensuring an atmosphere where learners, customers, staff, governors and other stakeholders celebrate equality and diversity in all activities. We respect all our students, staff and service users, and we celebrate our similarities and value our differences.

We seek to provide a supportive learning environment which demonstrates respect for, and acceptance of, difference. Additionally, in keeping with our legal obligations, we aim to provide the opportunity for all members of the community, irrespective of perceived religious belief, political opinion, gender, sexual orientation, marital status, age, ethnicity, those with or without a disability or dependants, to participate fully in all levels of academic, vocational and leisure courses which we provide.

## Terms and Conditions for enrolment and application

Terms and Conditions for enrolment and application will apply to all potential and existing learners. These Terms and Conditions are issued in relation to enquiries, applications and/or enrolments at Belfast Met.

## Changes to Terms and Conditions

Belfast Met may change the Terms and Conditions at any time but only under exceptional circumstances. Therefore, it is advised that you print and keep a copy at the time of application

and/or enrolment for your records. Changes to our Terms and Conditions are shown under the Document History section.

Changes to our course changes will be managed through Belfast Met's Course/Closure Procedure.

We will continue to review these Terms and Conditions using information obtained from our Student Council (e.g. via the Student Voice), from student surveys, and feedback from our Awarding Organisations, Regulators, DfE, QAA, ETI, Partner Universities and our Quality Assurance forums.

Please visit the College's website regularly for the up-to-date policies and procedures referred to in these Terms and Conditions.

## Requests for Alternative Formats

Requests for the provision of all or part of this document in alternative formats – Braille, DAISY, large print, audio or alternative languages will be considered. To submit a request, please contact email: [corpcommsmarket@belfastmet.ac.uk](mailto:corpcommsmarket@belfastmet.ac.uk).

**Please be advised that some courses may have additional costs that students will “Need to Provide”. These are indicated as “NTP” in the prospectus e.g. equipment and resources. See course listing for more information.**

## **Safeguarding of Children, Young People and Adults at Risk and in Need of Protection**

Belfast Met aims to ensure that all students, staff and stakeholders of the College experience an inclusive, enjoyable and safe environment, in which they feel respected and valued. We all share an objective to keep children, young people, adults at risk and adults in need of protection, safe from harm. This College Safeguarding, Care & Welfare Policy and associated procedures document are built upon a foundation of 'zero tolerance' of abuse to all children, young people, adults at risk of harm and adults in need of protection.

They provide robust guidance on how to report and respond to concerns about disclosed or suspected abuse. Abuse of Children and Young People can be Physical, Sexual, Emotional, Neglect or Exploitation, in nature, with respect to Adults at Risk and in need of Protection, this list is extended to include Institutional and Financial.

The College has a Designated Safeguarding Team who lead on the College's safeguarding provision. Details of our Designated Safeguarding Team can be found on the [College website](#).

In the most recent ETI inspection (November 2025), the inspection team determined:

*The evidence provided by the College demonstrates that the arrangements for child protection and adult protection align to the current statutory guidance.*





# Disclaimer

This information is correct at the time of publishing, however, it may be subject to change and no course advertised is guaranteed. Where a course is cancelled, applicants will be invited to apply to another course and the date of their original application will be applied to the new application.

Please note that courses are delivered in English (unless otherwise stated). The location referenced may be the primary location and you may have to attend at an alternative campus. The information contained within this prospectus is accurate as of December 2025.

Belfast Met is committed to providing publications that are accessible to all. Please see the College Accessibility Webpage for more information:

[www.belfastmet.ac.uk/Accessibility](http://www.belfastmet.ac.uk/Accessibility)

To request additional copies of this publication in a different format please email:

[marketinganddesign@belfastmet.ac.uk](mailto:marketinganddesign@belfastmet.ac.uk)

Further information for applicants including details on how to apply, enrolment onto courses with no entry criteria and payments can be found on our website at:

[www.belfastmet.ac.uk/full-time/how-to-apply](http://www.belfastmet.ac.uk/full-time/how-to-apply)









**Join our multi  
award-winning College**



**[www.belfastmet.ac.uk](http://www.belfastmet.ac.uk)**