

CHOOSE BELFAST MET CHOOSE SUCCESS

MADE FOR YOU



**APPLY
NOW**

Part-Time Courses



belfastmet.ac.uk



Welcome

Belfast Met's Part-Time courses will equip you with the right qualification and skills in order to pursue a change in career, improve your employability, give you an additional edge for highly sought-after vocations or take up a new hobby!

From Information Technology to Digital Marketing, you can be assured that you are acquiring the right skills and qualifications for the job that you've always wanted. Our wide variety of programmes offer you the chance to develop a new passion and fulfil your potential in lots of different ways.

Check out the courses on offer and take on the challenge of inspiring, flexible and cost-effective learning at Belfast Met.

Start Here. Go Anywhere. Join us and make Belfast Met your first choice for the next stage of your learning journey. **Choose Belfast Met. Choose Success.**

Principal and Chief Executive
Louise Warde Hunter

Louise Warde Hunter



Contents

Academic & Continuing Education >	2
Belfast Business School >	4
Creative & Digital Industries >	8
Health, Wellbeing & Inclusion >	12
Science, Engineering & Construction >	16





Academic
& Continuing Education

The School curriculum plays an important role in promoting social inclusion and diversity in the College with courses that are designed to remove barriers to education and support progression for all.



ace@belfastmet.ac.uk

93%

Belfast Met is an
excellent place to study

Learner Satisfaction Survey 2023



Languages

French

Beginner to A Level >

Spanish

Beginner to A Level >

German

Beginner to Intermediate >

Italian

Beginner to
Advanced Conversation >

Japanese

Beginner >

Portuguese

Beginner >

Irish

Beginner >

GCSE

GCSE

English Language >

GCSE (CCEA)

Mathematics

Foundation Units M3 & M6 >

GCSE (CCEA)

Mathematics

Higher Units M3 & M7 >



Scan the
QR Codes

or

Select the
individual
courses to
find out
further
information



A Level

A Level in Business (One Year) >

A Level in English Literature
(One Year) >

A Level in Government &
Politics (One Year) >

A Level in History (One Year) >

A Level in Mathematics
(AS & A2) >

A Level in Sociology (One Year) >

A Level in Psychology (One Year) >

Access to University

Access Diploma in
Sociology / Psychology >

Access Diploma in
Computing for the Economy >

Higher Education Certificate in
Combined Social &
Behavioural Science >



Scan the
QR Codes

or

Select the
individual
courses to
find out
further
information





.....

The Belfast Business School is aligned to the needs of the local economy. We are developing future leaders in marketing, business, accounting, hospitality, tourism and events.



bbsinfo@belfastmet.ac.uk

92%

believe they made the right course choice.

Learner Satisfaction Survey 2023



Business & Management



Scan the QR Codes

or

Select the individual courses to find out further information

Accounting

Certificate in
Accounting Technicians Ireland >
(ATI Level 4)

Diploma in
Accounting Technicians Ireland >
(ATI Level 5)

Coaching & Mentoring

ILM Certificate in
Effective Coaching and Mentoring >
(Level 5)

Education & Training

City & Guilds Award in
Education and Training >
(Level 3)

City & Guilds Certificate in
Assessing Vocational Achievement >
(Level 3)

City & Guilds Award in
The Internal Quality Assurance of Assessment Processes and Practice >
(Level 4)

Leadership & Management

ILM Certificate in
Leadership and Management >
(Level 3)

ILM Certificate in
Leadership and Management >
(Level 5)

ILM Certificate in
Leadership and Management >
(Level 7)

BA Professional Development in
Leadership and Management >
(Level 6)

Payroll/Book-keeping

IAB Award in
Payroll for Business >
(Level 1)

IAB Award in
Payroll for Business >
(Level 2)

IAB Award in
Computerised Bookkeeping >
(Level 1)

IAB Certificate in
Computerised Bookkeeping >
(Level 2)

IAB Certificate in
**Computerised Bookkeeping and
Accounting >**
(Level 3)

Procurement & Supply
CIPS Diploma in
Procurement and Supply >
(Level 4)

CIPS Advanced Diploma in
Procurement and Supply >
(Level 5)

CIPS Professional Diploma in
Procurement and Supply >
(Level 6)

Professional Development
CIPD Foundation Certificate in
People Practice >
(Level 3)

CIPD Associate Diploma in
People Management >
(Level 5)

CIPD Associate Diploma in
**Organisational Learning
and Development >**
(Level 5)



Scan the
QR Codes

or

Select the
individual
courses to
find out
further
information

Hospitality & Catering

Barista

City & Guilds Award in
Barista Skills >
(Level 2)

Cookery

Cookery Club >

Patisserie and Confectionery

SEG Certificate in
**General Patisserie and
Confectionery >**
(Level 2)

SEG Certificate in
**General Patisserie and
Confectionery >**
(Level 3)

Professional Chef / Cookery

FDQ Diploma in
Professional Chef >
(Level 2)

FDQ Diploma in
Professional Chef >
(Level 3)



Scan the
QR Codes

or

Select the
individual
courses to
find out
further
information

Hair, Beauty & Barbering

Hair and Beauty

City & Guilds Certificate in
**Assessing Vocational
Achievement – Hair & Beauty >**
(Level 3)

City & Guilds Certificate in
Nail Technology Services >
(Level 2)

Award in
**Hair and Beauty Management -
Salon Management >**
(Level 5)

Certificate in
Hair and Beauty Management >
(Level 5)

Extended Certificate in
Hair and Beauty Management >
(Level 5)

Diploma in
Hair and Beauty Management >
(Level 5)



Scan the
QR Codes

or

Select the
individual
courses to
find out
further
information

Barbering

City & Guilds Certificate in
Barbering Techniques >
(Level 2)

Travel & Tourism

Tour Guiding

OCN NI Award in
Tour Guiding >
(Level 2)

OCN NI Certificate in
Tour Guiding >
(Level 3)



Scan the
QR Codes

or

Select the
individual
courses to
find out
further
information



Creative &
Digital Industries

From Fashion and Visual Effects to Graphic Design and Music, our school combines artistry with cutting edge technology, as well as providing the tools to succeed within the tech and creative industries.



creativedigital@belfastmet.ac.uk

94%

The facilities provided at
the College help me learn

Learner Satisfaction Survey 2023



Media & Journalism

OCN NI Certificate in
Sports Journalism >
(Level 3)



Electrical / Electronic Engineering

Higher National Diploma in
**Engineering (Electrical/
Electronic Engineering) in
Industrial Automation >**
(Level 5)



Computing & IT

CISCO CCNA
Routing and Switching >

Adobe Premier Pro
Video Editing and Production >

CompTIA
Linux+ >

BSc Hons (Validated by
The Open University)
**Cyber Security with
Cloud and Networking
Infrastructure (Top-Up) >**
(Level 6)



Scan the
QR Codes

or

Select the
individual
courses to
find out
further
information

Foundation Degree (Validated by The
Open University)

**Software and Cloud Development
with Data Analysis >**
(Level 5)

BSc Hons (Validated by
The Open University)

**Software and Cloud Development
with Data Science (Top-Up) >**
(Level 6)

Microsoft Office Specialist (MOS)
Excel (Core) >
Excel (Expert) >

Arts, Craft, Fashion & Photography

Foundation Diploma in
Art, Design and Media Practice >
(Level 4)

Leisure Photography
Using your Digital Camera >

GCSE
Photography >

City & Guilds Certificates in
Textiles >



Scan the
QR Codes

or

Select the
individual
courses to
find out
further
information

Arts, Craft, Fashion & Photography Continued

OCR Cambridge Technical
Certificate in
Costume and Fashion >
(Level 3)

Dressmaking >

Ceramics >





Health, Wellbeing
& Inclusion

Whether it's in health and social care, counselling, sport, or children's care and education, staff and students within the School for Health, Wellbeing and inclusion have a united desire to make a difference. Our courses equip students with the specialist knowledge, skills and qualifications recognised by employers for working in these sectors, in practitioner, supervisory, managerial and professional roles.



Contact: hcsinfo@belfastmet.ac.uk

98%

Belfast Met values students regardless of their unique backgrounds, identities, and abilities



Health, Social Care & Protective Services

NCFE CACHE Diploma in
Health and Social Care (Adults)
(Northern Ireland) >
(Level 2)



Health, Social Care & Counselling

CPCAB Certificate in
Counselling Skills >
(Level 2)

CPCAB Certificate in
Counselling Studies (Evening) >
Counselling Studies (Day) >
(Level 3)

Pearson BTEC HNC in
**Healthcare Practice (Integrated
Health and Social Care) (RQF) >**
(Level 4)

(University of Ulster) Certificate in
Counselling Studies (Day) >
Counselling Studies (Evening) >
(Level 4)



Scan the
QR Codes

or

Select the
individual
courses to
find out
further
information

Foundation Degree in
**Integrative Counselling
Practice (Day) >**
**Integrative Counselling
Practice (Evening) >**
(Level 5)

Childhood Studies

Diploma in Childcare
Early Years (Level 2) >
Early Years (Level 3) >

Fully Funded
Childcare Apprenticeship (Evening) >
(Level 2)

Fully Funded
Childcare Apprenticeship (Day) >
Childcare Apprenticeship (Evening) >
(Level 3)

Diploma in Childcare
Classroom / Teaching Assistant >
(Level 3)

CACHE Certificate for the
**Advanced Practitioner in Schools
& Colleges >**
(Level 4)



Scan the
QR Codes

or

Select the
individual
courses to
find out
further
information

Childhood Studies continued

Diploma in
**Children's Care, Learning
& Development – Leadership
& Management >**
(Level 5)

Fully Funded
Higher Level Apprenticeship in
**Children's Care, Learning &
Development – Leadership
& Management >**
(Level 5)

Diploma in
**Playwork - Leadership
& Management >**
(Level 5)

Sport

Active IQ Certificate in
Gym Instructing >
Gym Instructing - Intensive >
(Level 2)

Active IQ Diploma in
Sports Massage Therapy >
(Level 3)

Active IQ Certificate in
Sports Massage Therapy >
(Level 4)

Active IQ Diploma in
Personal Training >
Personal Training - Intensive >
(Level 3)

Beginners to Intermediate
Tai Chi >



Scan the
QR Codes

or

Select the
individual
courses to
find out
further
information



Health, Wellbeing & Inclusion

Our courses also provide
academic study options with
clear progression pathways
and continuous professional
development in these disciplines.

The school delivers the full range
of courses to meet a diversity of
learning and career aspirations.
Most courses include elements
of applied learning like work
placement and project based
learning.

Not only does this makes
learning more relevant and
stimulating, it also helps develop
self-confidence and important
transferable skills that can
give you a real edge with your
academic and career success.



Science, Engineering
& Construction

Belfast Met has acquired the prestigious STEM assured status, guaranteeing a stellar standard in science, technology, engineering and maths. Our offering is designed with the help of employers and delivered by teams with years of industry experience.



scienceengconstruction@belfastmet.ac.uk

97%

Tutors encourage me to
work to the best of
my ability

Learner Satisfaction Survey 2023



Construction

Building Information Modelling (BIM)

Building Information
Modelling (BIM) >
(Level 3)

Construction Management

Higher National Certificate in
Construction Management >
(Level 4)

Digital Construction

Digital Construction Skills >
(Level 2)

Joinery

DIY Joinery

Practical Joinery >
(Level 2)



Scan the
QR Codes

or

Select the
individual
courses to
find out
further
information



Electrical & Security

AM2 Preparation

AM2 Preparation >

Experienced Worker Security Systems

Experienced Worker
Security Systems >
(Level 3)

Engineering

Computer Aided Design (CAD)

Computer Aided Design (CAD) >
(Level 2)

Welding

Welding Skills (Monday) >
Welding Skills (Wednesday) >
(Levels 1-3)

CSWIP 3.0 Visual Welding Inspector >

Welder coding – The Welding
Institute Assessment (TWI) >



Scan the
QR Codes

or

Select the
individual
courses to
find out
further
information

Science

Access
Access Diploma in
Biological / Biomedical Science >

GCSE Science

- GCSE Biology >
- GCSE Chemistry >
- GCSE Physics >
- GCSE Single Award Science >
- GCSE Astronomy >

AS Science

- AS Biology >
- AS Chemistry >
- AS Physics >

A2 Science

- A2 Biology >
- A2 Chemistry >
- A2 Physics >



Scan the
QR Codes

or

Select the
individual
courses to
find out
further
information

Leisure

Bird Watching
Bird Watching >

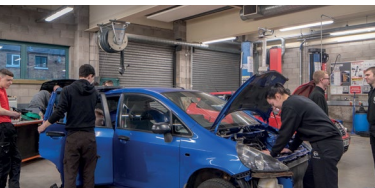


Scan the
QR Codes

or

Select the
individual
courses to
find out
further
information





Campus Facilities

Urban Escape Titanic Quarter Campus

Open to the public, our state-of-the-art Hair, Barbering, Beauty and Spa facilities are located in the Titanic Quarter campus, offering a vast range of services and treatments using market leading products at a highly competitive charge. We offer appointments Mon-Fri including some evenings (term-time only). Check out our FB page @UrbanEscapeBelfastMet or call at Urban Escape reception for more info or to make an appointment.

Student Welfare and Well-being

Here at Belfast Met we take our duty of care towards our students very seriously, and to that end we have a wealth of student support services designed to help and support you at critical points during your educational journey. These include our Matrix accredited Careers and Employability Service, our award-winning Inclusive Learning Service and our Student Funding Team, which is designed to support students who are economically disadvantaged. It also includes our new Student



Wellbeing Team designed to provide an holistic approach to student health and well-being across the college, our vibrant Students' Union for all your extracurricular activities, our modern and inspiring Library and Learning Resource areas, and our Student Counselling service for when you need a protective listening ear. The details of all of these student support services, and indeed many more, can be found in the Student Support Handbook. Ask for a copy at any campus reception area or download a copy from our website.

Library & Information Service

Belfast Metropolitan College has a modern and vibrant Library Service designed to provide students access to resources both on and off campus. With modern facilities which are open and fully staffed for over 50 hours per week, each library hosts a range of books, access to PCs, photocopiers, printers and a mix of study areas including zoned silent areas. Electronic resources such as journals or eBooks are available 24/7 from off campus and these give students access to an enormous range of research material wherever they choose to study.



Student Spaces

Titanic Quarter Campus

We have a Students' Union common room in our Titanic Quarter Campus on the 1st floor. Here you can relax between classes, meet with friends, eat lunch or maybe play a game of pool, table tennis or Foosball. It's also a chance to meet your student council and get involved in clubs & societies.

Castlereagh Campus

The student common room is based in Block 5 beside Café Met. It forms part of the student support hub where you can get information on all support services such as student funding, Inclusive learning, careers and student well-being. We have sports facilities on this campus, with the rugby academy and the girls' sports club meeting every week.



Millfield Campus

The student common room is based in Building 1 on the 2nd floor as part of the Student Support Hub. Here you can meet with friends, play a game of pool or play a game on the new PS4. All support services are here so you can find out information on student funding, careers, inclusive learning or meet with the well-being team.



[Click to Watch Tours For Each Campus](#)



Information for applicants and students

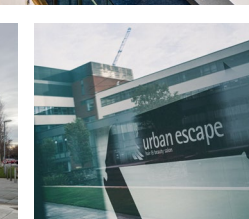
Complaints and Compliments

If you have a complaint or compliment, please refer to the College Complaints and Compliments Policy. This is available at: www.belfastmet.ac.uk/about-us_corporate-information_freedom-of-information_complaints.aspx. Any complaint will be dealt with fairly, effectively and confidentially.

General Information

To find further information for applicants and students, please visit: www.belfastmet.ac.uk/about-us/

The College website www.belfastmet.ac.uk/life-at-the-met/ and Student Handbook (available online and in the reception areas of all campuses) provide detailed information about the range of support services offered by the College to enhance your learning experience.



Requests for Alternative Formats

Requests for the provision of all or part of this document in alternative formats – Braille, DAISY, large print, audio, computer disc or alternative languages will be considered. To submit a request, please contact email: marketinganddesign@belfastmet.ac.uk.

All courses within Belfast Met are delivered and assessed in English, except from language specific courses. If English is not your first language, your competence in English must be verified prior to enrolling on your chosen course. You may be required to complete an assessment prior to the course start date.

College Disclaimer

This information is correct at time of publishing, however, it may be subject to change and no course advertised is guaranteed.

Please note that courses are delivered in English (unless otherwise stated). The location referenced may be the primary location and you may have to attend at an alternative campus.

Courses within this publication are subject to change or cancellation due to Covid-19 as a response to government guidance. Course start dates are subject to change in line with circumstances connected to Covid-19.

In the event that a change is made to your course, you will be notified by a member of our Administration team.

More information is available in Belfast Met's Terms and Conditions for enrolment and application. The information contained within this prospectus is accurate as of July 2023.



belfastmet.ac.uk



CHOOSE BELFAST MET CHOOSE SUCCESS