



**HIGHER EDUCATION  
COURSES 2026**

**YOUR FUTURE STARTS WITH  
REAL SKILLS**

**APPLY  
NOW**

**belfastmet.ac.uk**



**MAKE IT AT THE MET**



# WELCOME

**Welcome to our Higher Education prospectus.  
We are delighted that you are considering  
taking your next career move with Belfast Met.**

Whether you are fresh from school, returning to education or wanting to study a stand-alone course to support your career goals and equip you for your next step into employment, you will find something that suits you here. Our college purpose is “Equipping learners, driving innovation, transforming lives” and we have been serving the people of Belfast and beyond for over 100 years.

At Belfast Met, we are committed to providing you with the skills that both you and local industry need to meet the demands of growing our economy today and in the future. We're proud of our tradition of ensuring that every learner realises their full potential and aspire to giving every student a rounded educational experience both in and beyond the classroom.

We wish you every success as you consider your future and hope to see you very soon.

Interim Principal and Chief Executive





# Prospectus Contents



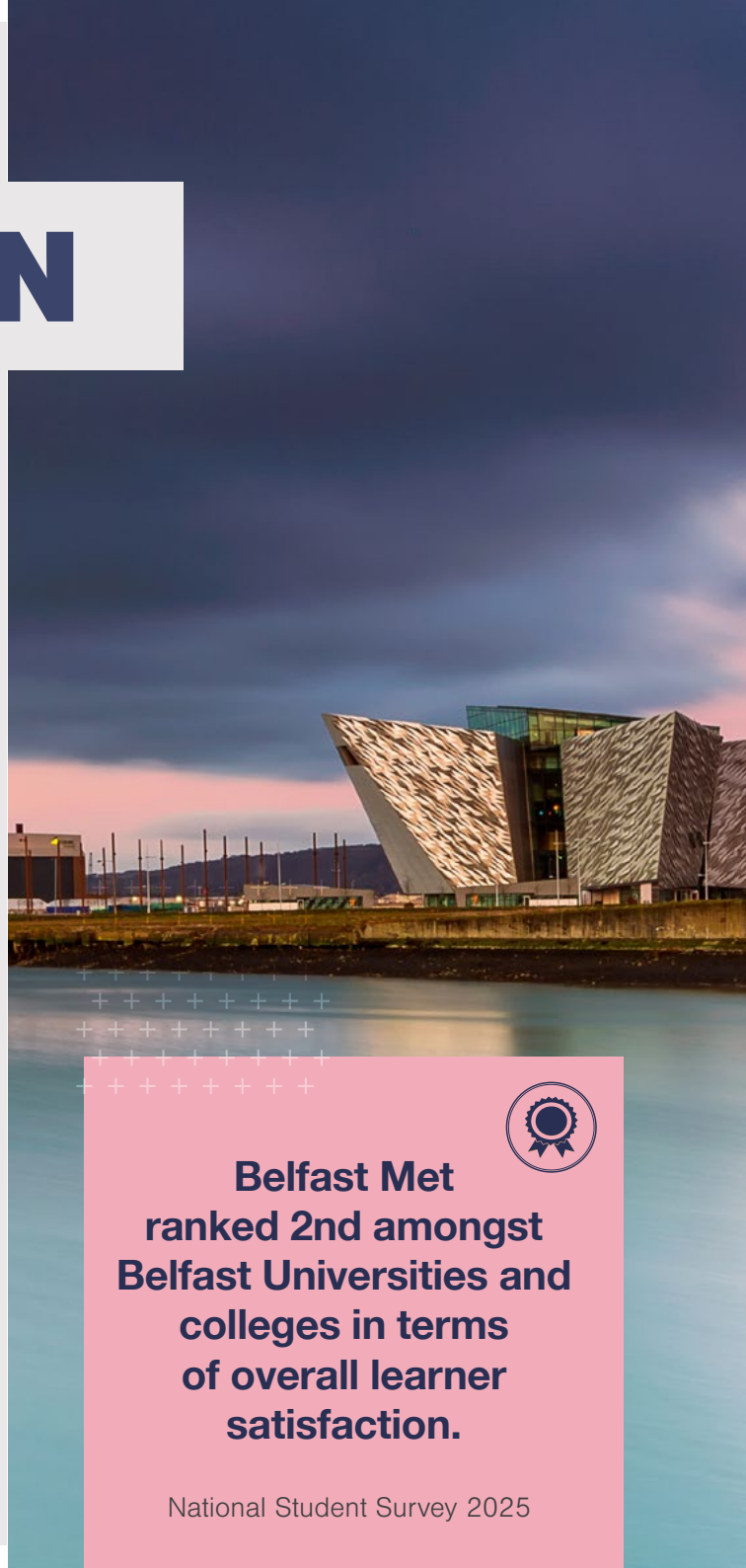



# HIGHER EDUCATION

**Belfast Met offers a selection of Higher Education courses at all levels, specifically tailored to industry demand and run in conjunction with top UK education providers.**

Our Higher Education partners include Queen's University Belfast, the Open University and Ulster University. We also offer a range of professional and technical awarding organisation programmes including the Institute of Leadership and Management, Chartered Institute of Personnel and Development, the Chartered Institute of Marketing and Pearson BTEC Higher Nationals.

As well as full degrees and foundation courses with our Higher Education partners, we offer a wide range of vocational courses and professional development, both full and part-time. All our Higher Education programmes face the same external checks and audits as a traditional university programme.



**Belfast Met  
ranked 2nd amongst  
Belfast Universities and  
colleges in terms  
of overall learner  
satisfaction.**

# Why choose Belfast Met?



## Choice

The widest range of courses available for Higher Education in Northern Ireland and you can apply for up to 5 courses without affecting your UCAS choices. (Please note some courses go through UCAS.)



## Cost

You will benefit from significantly lower costs than universities, which means less student debt in the future.



## Job opportunities

Our courses reflect industry demand, providing you with the skills you need to get the job you want.



## Location

With four main campuses in Belfast getting to classes is easier than ever, not to mention the great student nightlife.



## Graduation

All students studying at Level 4 and above may be eligible to graduate from Belfast Met at our ceremonies held in Titanic Belfast.

# Higher Education Entry Criteria

## Higher Education Course Entry Requirements (2026-27 academic year)

Each Higher Education programme has its own distinctive course entry requirements. This is set as a minimum UCAS points for entry. On some programmes, applicants must also hold subject specific qualifications to gain a place. Therefore, it is essential that applicants check entry requirements for each programme they are applying for. Please note, these are qualifications that applicants must have been completed and certified by the start date of the course to gain entry onto the respective programmes. Please note that in the event of undersubscription to a course, entry requirements may be lowered.

### English Language

There are minimum English Language requirements for full-time Higher Education programmes. Applicants must hold a GCSE pass at Grade C/4 or above in English Language. Level 2 Certificate in Essential Skills Literacy may be regarded as an acceptable alternative to GCSE English Language. The College may accept an equivalent level of qualification. Some courses may require higher than the minimum Grade C/4. You are advised to check the individual course entry requirements. You can find these within the Entry Requirements section under each individual course. Where a GCSE grade in English is specified as the only qualification accepted, other English competency qualifications may not apply. If you have not achieved GCSE English Language Grade C/4 or an equivalent level, you will be asked to provide evidence of English Language competency.

Other qualifications may be accepted as evidence of level of competency on a case-by-case basis. To provide evidence of English Language competency, please contact us on **028 90 265 265** or email: [studentportal@belfastmet.ac.uk](mailto:studentportal@belfastmet.ac.uk) You will be referred to the appropriate curriculum area who will guide you on your next steps.

Where an ESOL qualification is used, the appropriate level must be achieved across all skills - Reading, Writing, Speaking & Listening. Applicants should also check the English language criteria for progression to other further and higher education institutions as these may vary.

### Mathematics Entry Requirements

Applicants must hold a GCSE pass at Grade C/4 or above in Mathematics. Level 2 Certificate in Essential Skills - Application of Number and Essential Skills Numeracy may be regarded as an acceptable alternative to GCSE Maths.

Please note that the following courses are an exception to the Level 2 Mathematics requirement:

- Foundation Degree in Tourism, Hospitality and Events Management (Travel & Tourism Specialisms) Validated by University of Ulster
- Foundation Science Degree Tourism, Hospitality and Events Management (Events Specialisms) Validated by University of Ulster

Applicants should also check the mathematics criteria for progression to other further and higher education institutions as these may vary.

## Accreditation of Prior Learning (APL)

We recognise that prior learning or experience may give some students credit towards a qualification to gain entry onto a programme or credit towards a programme of study. Please refer to our Accreditation of Prior Learning (APL) process at: [APL Guidance Notes for HE Applicants](#)

## Important information

The College reserves the right to increase the entry requirements for all Higher Education provision before offers are made, to reflect required academic standards as specified by the Awarding Body/validating organisation. This will be clearly communicated in the entry requirements on course details page.

## International Qualifications

Belfast Met and University partners (UU, QUB and OU) must verify that applicants holding international qualifications meet course entry requirements before they can be enrolled onto a course.

To help us verify that course entry requirements are met, applicants must:

- Provide a full English language translation of your qualifications. Belfast Met will only accept the full English translation from [www.enic.org.uk](http://www.enic.org.uk), UK ENIC is the UK National Information Centre for the recognition and evaluation of international qualifications and skills.
- Ensure that the translation provides clear evidence that your qualifications meet or exceed the course entry requirements. UK ENIC can also help with Statements of Comparability and UK Qualification Reference Statements. There is a charge for this service.
- For more information on UK ENIC, visit their website at [www.enic.org.uk](http://www.enic.org.uk).
- The Department for Communities can also provide information and/ or help with qualification equivalencies. For more information, visit their website at: <https://www.communities-ni.gov.uk/>.

## Access NI/ SOSCARÉ

Admission to certain courses will be subject to satisfactory Access NI/criminal records and SOSCARÉ checks.

## Criminal Convictions Disclosure Policy

The College has a student Criminal Convictions Disclosure Policy therefore you must disclose criminal convictions when applying or enrolling onto a course. More information is available on our Student Criminal Disclosures webpage at [Student Criminal Disclosures](#) Failure to disclose will impact on your place at the College including work placements.

## Non-Academic course entry requirements

You must also ensure that you meet the following non-academic entry requirements:

- For courses running during academic year September 2026 – August 2027, you must be 16 years old by 1 July 2026 (born before 2nd July 2010).
- You must provide proof of your right to study in the UK. For courses with work placement, you must also provide proof of your right to work in the UK.
- You must provide photographic evidence of your identity.



# Higher Education Graduation

**Every autumn, our students are rewarded for their hard work and achievements at a prestigious Higher Education Graduation Ceremony held in the iconic Titanic Belfast.**

The special ceremony is followed by entertainment, refreshments and photography ensuring amazing memories from the day are captured.

So, what are you waiting for - take on a course at Belfast Met and soon you could be celebrating too!

For further information visit our website:

> [Graduation](#)







**All students  
studying  
courses Level  
4 or above may  
be eligible to  
graduate from  
Belfast Met.**



# Campus Facilities & Student Spaces

All our student spaces offer a student support hub where you can get information on student funding, inclusive learning, careers and student wellbeing.



## **Titanic Quarter Campus**

The base for our student council and the hub for our wide range of clubs and societies, as well as pool, fossball and table tennis facilities.

[Click to explore Titanic Quarter Campus](#)



## **Millfield Campus**

Our second-floor common room provides space to unwind, with pool and tennis tables a PS4 and range of games for your use.

[Click to explore Millfield Campus](#)



## **Castlereagh Campus**

Discover cutting-edge IT HLAs and Higher Education courses designed to launch your career in the digital world. With expert tutors, industry partnerships, and hands-on learning, Castlereagh Campus is your gateway to success in the fast-growing tech sector.

[Click to explore Castlereagh Campus](#)



## **E3 Campus**

E3 campus is home to the Belfast film and Television school. Most Higher Education creative and media production courses are taught here. It is a state-of-the-art venue that also includes specialist media studio facilities. E3 is one of the first campuses in the United Kingdom to offer a virtual production stage.

[Click to explore e3 Campus](#)







# Student Support Services

## Student Support

The cost of living crisis has heightened the many barriers to education and learning that our students face. To help you overcome these barriers and enable you to strive towards your full potential, we have a wealth of student support services including: Student Wellbeing, Inclusive Learning, Careers and Employability, Student Funding, Students' Union, Student Counselling and a dedicated College Safeguarding Team. Details of all of these services can be found here:

[Student Support](#)

## Student Welfare and Wellbeing

We have a dedicated Centre for Student Wellbeing whose purpose is to create an inclusive environment that supports and empowers students. We aim to do this through timely and accessible information. Providing guidance and access to services which will enable you to understand and proactively manage your wellbeing and mental health. We put an emphasis on not just preventing problems and/or seeking help, but promoting positive wellbeing. Our approach is friendly, confidential and student focused.

[Student Wellbeing](#)

## Library and Information Service

Our modern and vibrant Library Service is designed to provide resources to students both on and off campus. Electronic resources are available 24/7 through our remote learning facilities and our libraries provide physical resources and support for over 50 hours a week. [Library Services](#)







### **Inclusive Learning**

At Belfast Met we welcome and encourage applications from students who have a disability, learning difficulty or long term medical condition. We are committed to ensuring that you have an equal opportunity to gain the maximum benefit from your experience here at the College. We are a dedicated, professional team who operate on all college campuses. We have a range of specialist services that we can offer while you are in College. For further information please email: [inclusivelearning@belfastmet.ac.uk](mailto:inclusivelearning@belfastmet.ac.uk) or call **02890 26 5064 /5097**

### **Student Funding**

For information, advice and guidance on funding options that may be available to you whilst studying please [click here](#), or contact our Student Funding team on **028 9026 5183** or email: [StudentFunding@belfastmet.ac.uk](mailto:StudentFunding@belfastmet.ac.uk)

### **Careers and Employability**

Sometimes knowing where to start is the hardest part. However it is important to take time to consider the various career and pathway options each course can lead to.

Belfast Met's Careers and Employability team is here to help you to better understand career and course options in order that you choose the course that is right for you. When you are on your course, you can also talk to us about how to enhance your skills and qualifications as well as availing yourself of professional support to help you achieve your next step.

Our Careers and Employability service holds the 'Matrix Standard' National Quality Award for information, Advice and Guidance. Contact us on **02890 26 5066** or email: [careers@belfastmet.ac.uk](mailto:careers@belfastmet.ac.uk) to make an appointment.





# Student's Union

## Students' Union

The Students' Union has three main aims.

### 1. Student Voice:

We support your elected Student Council and help to train and support your Class Reps too; ensuring the student voice is heard within the College.

### 2. Student Engagement:

We support and promote various extracurricular activities such as a range of sports clubs and societies.

### 3. Student Welfare:

We campaign for and promote several initiatives targeted at improving student welfare.

For more information about our Students' Union [click here](#).

Keep up to date by following our social channels:



[Facebook](#)



[X](#)



[Instagram](#)



[TikTok](#)



# 93%

of learners agreed their course  
has developed knowledge &  
skills they need for the future.

National Student Survey 2025







## Academic & Continuing Education

Progression to Higher Education is a pathway to countless opportunities and Access Courses are designed to help learners achieve this. The school acknowledges the challenges faced by learners and recognises students support as a foundation to ensure effective participation.



[ace@belfastmet.ac.uk](mailto:ace@belfastmet.ac.uk)



# 94%

overall satisfaction amongst  
Higher Education learners.

Learner Satisfaction Survey 2025





## Access to University

Level 4 Certificate in Higher Education

**Combined Social and Behavioural Science (Day) >**

[Validated by Ulster University](#)

Level 4 Certificate in Higher Education

**Combined Social and Behavioural Science (Evening) >**

[Validated by Ulster University](#)

## CELTA

Level 5 Cambridge Certificate in

**Teaching English to Speakers of Other Languages (CELTA) >**

Level 5 Cambridge Certificate in

**Teaching English to Speakers of Other Languages (CELTA) (Mixed-mode) >**





.....

**The Belfast Business School delivers a wide-ranging higher education curriculum offer, which is aligned to the needs of the local economy. We are developing future leaders in marketing, business, accounting, hospitality, tourism and events.**



**[bbsinfo@belfastmet.ac.uk](mailto:bbsinfo@belfastmet.ac.uk)**



**96%**

**of learners agreed they were learning skills that would help them in real life.**

Learner Satisfaction Survey 2025



## Accountancy >

Level 5 Higher Level Apprenticeship  
**Accountancy >**

---

Level 5 Foundation Science Degree  
**Accounting >**  
[Validated by Ulster University](#)

---

Level 6 Higher Level Apprenticeship  
**Accounting Technology >**  
[Validated by The Open University](#)

## Business >

Level 5 Higher National Diploma  
**Business Management >**

---

Level 5 Higher Level Apprenticeship  
**HND in Business Management >**

## Marketing >

Level 5 Higher Level Apprenticeship  
**Marketing >**  
[Validated by Ulster University](#)

---

Level 5 Foundation Degree  
**Marketing >**  
[Validated by Ulster University](#)

## Culinary Arts >

Level 5 Higher Level Apprenticeship  
**Culinary Arts >**  
[Validated by The Open University](#)

## Travel and Tourism and Events Management >

Level 5 Foundation Science Degree  
**Tourism, Hospitality & Events Management with  
Specialisms >**

---

Level 5 Higher Level Apprenticeship  
**Hospitality Specialism >**  
[Validated by Ulster University](#)

---

Level 5 Higher Level Apprenticeship  
**Event Management Specialism >**  
[Validated by Ulster University](#)

---

Level 5 Foundation Science Degree  
**Event Management Specialism >**  
[Validated by Ulster University](#)

---

Level 5 Foundation Degree  
**Travel Specialism >**  
[Validated by Ulster University](#)

## Hair and Beauty Management >

Level 5 Diploma  
**Hair and Beauty Management (General) >**



Creative &  
Digital Industries

.....

From Fashion and Visual Effects to Graphic Design and Music, our school combines artistry with cutting edge technology, as well as providing the tools to succeed within the tech and creative industries.



[creativigital@belfastmet.ac.uk](mailto:creativigital@belfastmet.ac.uk)

96%

of learners agreed their  
course was preparing them  
well for a future career.

Learner Satisfaction Survey 2025





## Art and Fashion >

Level 6 BSc (Hons) Degree

**Fashion Production and Business >**

[Validated by The Open University](#)

## Electronics & Industrial Automation >

Level 5 Higher National Diploma

**Electrical/Electronic Engineering >**

Level 5 Higher National Diploma

**Electrical & Electronic Engineering (Part-time) >**

## Software Engineering & Computing >

Level 5 Higher National Diploma

**Computing (Software Engineering) with Forensics, Security & Networking >**

Level 5 Foundation Degree

**Computing (Software Engineering) >**

[Validated by Ulster University](#)

Level 5 Foundation Degree

**Computing (Software Engineering) with Cyber, Mobile Development & Artificial Intelligence >**

[Validated by Ulster University](#)

## Cyber Security/ Cloud Computing/ Networking >

Level 5 Higher Level Apprenticeship

**Cyber Security with Cloud and Network Infrastructure >**

[Validated by The Open University](#)

Level 5 Foundation Degree

**Cyber Security with Cloud and Network Infrastructure >**

[Validated by The Open University](#)

Level 6 BSc (Hons) Degree

**Cyber Security with Cloud and Network Infrastructure >**

[Validated by The Open University](#)

Level 6 BSc (Hons) Degree Higher Level Apprenticeship

**Cyber Security with Cloud and Network Infrastructure >**

[Validated by The Open University](#)

## Software & Cloud Development with Data Analysis >

Level 5 Foundation Degree

**Software and Cloud Development with Data Analysis >**

[Validated by The Open University](#)

Level 5 Higher Level Apprenticeship

**Software and Cloud Development with Data Analysis >**

[Validated by The Open University](#)

Level 6 BSc (Hons) Degree

**Software and Cloud Development with Data Science (Full-time) >**

[Validated by The Open University](#)

Level 6 BSc (Hons) Degree

**Software and Cloud Development with Data Science (Part-time) >**

[Validated by The Open University](#)

## Software & Cloud Development with Data Analysis >

Level 6 BSc (Hons) Higher Level Apprenticeship  
**Software and Cloud Development with Data Science (Part-time) >**

[Validated by The Open University](#)

## Visual Effects >

Level 5 Foundation Degree  
**Digital Art & Animation for Visual Effects (VFX) and Virtual Production >**

[Validated by The Open University](#)

## Media >

Level 5 Foundation Degree  
**Journalism and Documentary Production >**

## Music >

Level 5 Foundation Degree  
**Music and Sound for Digital Arts (Performance and Production) >**

[Validated by The Open University](#)

## Game Development & Multimedia >

Level 5 Foundation Degree  
**Game Art, Design and Development >**

[Validated by The Open University](#)

Level 5 Foundation Degree  
**Graphic Design and Illustration >**

[Validated by The Open University](#)

## Film, TV and Cinematography >

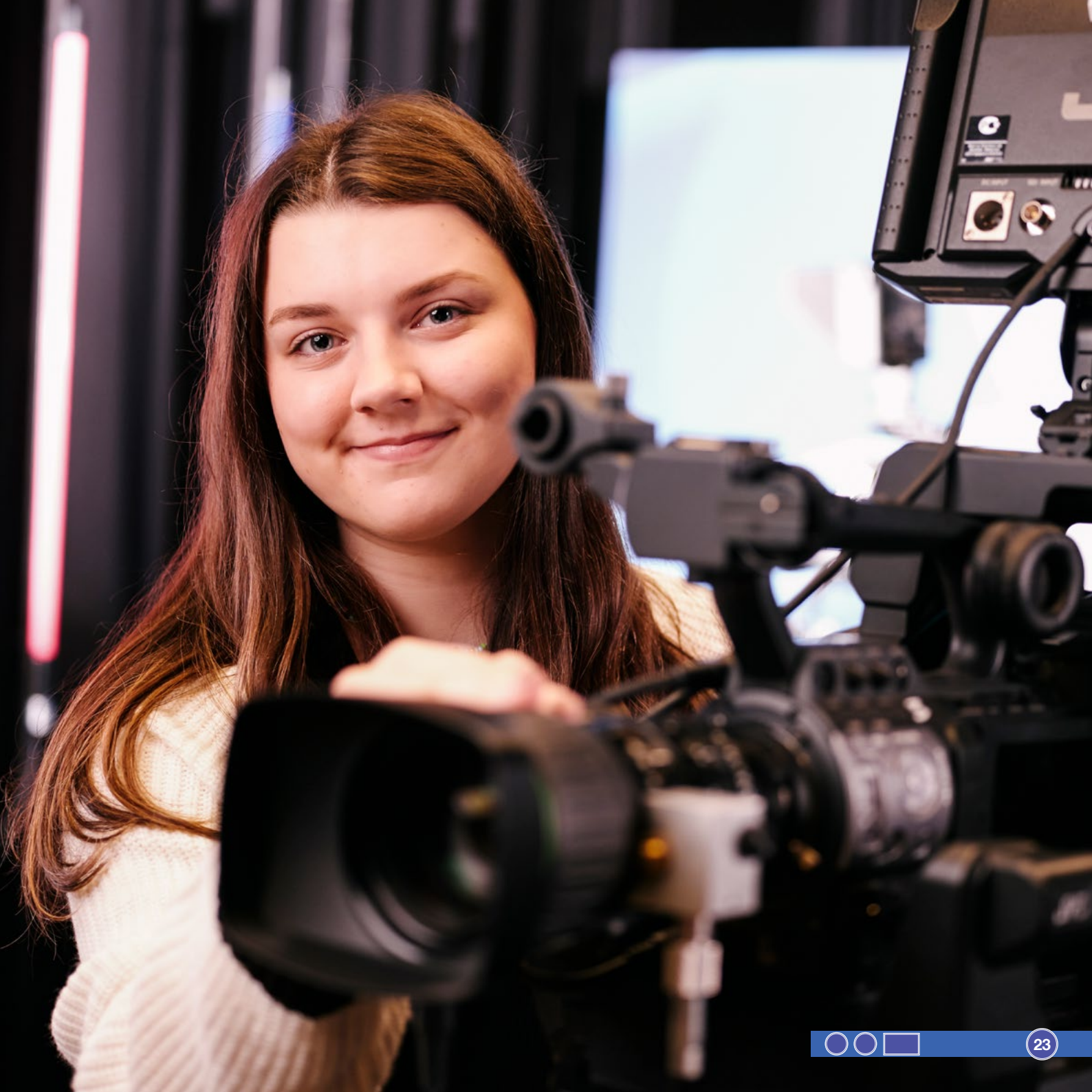
Level 5 Foundation Degree  
**Commercial Photography & Cinematography >**  
[Validated by The Open University](#)

Level 5 Foundation Degree  
**Film Production >**  
[Validated by The Open University](#)

Level 5 Foundation Degree  
**Screen Acting and Producing >**  
[Validated by The Open University](#)

## Esports >

Level 5 Foundation Degree  
**Esports (Part-time) >**





## Health, Wellbeing & Inclusion

At the School for Health, Wellbeing and Inclusion we aspire to make a difference to peoples' lives. Our courses equip students with the qualifications, skills and knowledge required for working as practitioners, supervisors and managers in the Health and Social Care, Early Learning and Childcare, Counselling, Sport and Rehabilitation.

All courses include elements of applied learning, work placement and project based learning. This helps develop key transferable skills and confidence to give you a real edge with academic and career success.



[hcsinfo@belfastmet.ac.uk](mailto:hcsinfo@belfastmet.ac.uk)



# 97%

of learners felt part  
of a diverse & inclusive  
culture at Belfast Met.

Learner Satisfaction Survey 2025





## Childhood Studies >

Level 5 Diploma

**\*Children's Care Learning and Development in Leadership (Management) (Part-time) >**

---

Level 5 Higher Level Apprenticeship

**\*\*Children's Care Learning and Development in Leadership (Management) (Part-time) >**

---

Level 5 Foundation Degree

**Early Childhood Studies (Full-time) >**

[Queen's University Belfast offered in conjunction with Stranmillis University College](#)

---

Level 5 Foundation Degree

**Early Childhood Studies (Part-time) >**

[Queen's University Belfast offered in conjunction with Stranmillis University College](#)

---

\* Funding may be available | \*\* Full funding available

## Counselling >

Level 4 Certificate

**Counselling Studies (Part-time) >**

[Validated by Ulster University](#)

---

Level 4 Certificate

**Counselling Studies (Part-time) (Evening) >**

[Validated by Ulster University](#)

---

Level 5 Foundation Degree

**Integrative Counselling Practice (Part-time) (Evening) >**

[Validated by Ulster University](#)

## Health and Social Care >

Pearson Level 4 Higher National Certificate

**Health and Social Care Practice >**

---

Pearson Level 4 Higher National Certificate

**Health and Social Care Practice (Part-time) (Evening) >**

---

Pearson Level 4 Higher National Certificate

**Health and Social Care Practice (Social & Community Work) >**

---

Level 4 Certificate in Higher Education

**Healthcare Practice >**

[Subject to Validation by the Open University](#)

---

Level 4 Higher National Certificate

**Healthcare Science (Nursing) >**

[\(Subject to approval by awarding body\)](#)

---

Level 6 BSc (Hons) Degree

**Social Work >**

[In collaboration with Ulster University](#)

---

## Sport >

Level 5 Foundation Degree

**Physical Education and Sport >**

[Validated by Stranmillis University and Queen's University](#)

---

Pearson Level 4 Higher National Certificate

**Sport and Exercise Science >**

---

Active IQ Level 4 Diploma

**Sports Massage Therapy (Part-time) >**

---

Level 5 Foundation Degree

**Sports Coaching and Performance Analysis >**

[Validated by The Open University](#)



Science, Engineering  
& Construction

Belfast Met has acquired the prestigious STEM assured status, guaranteeing a stellar standard in science, technology, engineering and maths. Our offering is designed with the help of employers and delivered by teams with years of industry experience.



[scienceengconstruction@belfastmet.ac.uk](mailto:scienceengconstruction@belfastmet.ac.uk)

95%

of learners would  
recommend Belfast Met to  
their family or friends.

Learner Satisfaction Survey 2025



## Animal Management >

Level 4 Higher National Certificate  
**Animal Management (Animal Science) >**

## Architectural Technology >

Level 5 Foundation Degree  
**Architectural Technology >**  
[Validated by Ulster University](#)

## Construction >

Level 5 Foundation Degree  
**Construction Engineering with Surveying >**  
[Validated by Ulster University](#)

Level 5 Higher Level Apprenticeship  
**Civil Engineering >**  
[Validated by Ulster University](#)

Level 5 Foundation Degree  
**Civil Engineering >**  
[Validated by Ulster University](#)

## Engineering >

Level 5 Foundation Degree  
**Mechanical Engineering >**  
[Validated by Queens University Belfast](#)

## Property, Housing and Planning >

Level 5 Foundation Degree  
**Property, Housing and Planning >**  
[Validated by Ulster University](#)

## Sciences >

Level 4 Higher National Certificate  
**Applied Biology >**

Level 5 Foundation Degree  
**Biological Sciences >**  
[Validated by Queens University Belfast](#)

Level 5 Foundation Degree  
**Biomedical Sciences >**  
[Validated by Queens University Belfast](#)

# Disclaimer

This information is correct at the time of publishing, however, it may be subject to change and no course advertised is guaranteed. Where a course is cancelled, applicants will be invited to apply to another course and the date of their original application will be applied to the new application.

Please note that courses are delivered in English (unless otherwise stated). The location referenced may be the primary location and you may have to attend at an alternative campus. The information contained within this prospectus is accurate as of November 2025.

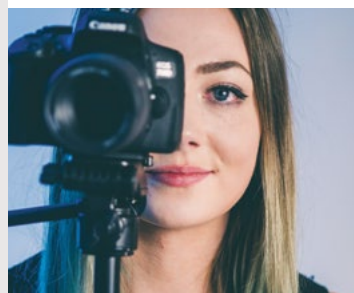
Belfast Met is committed to providing publications that are accessible to all. Please see the College Accessibility Webpage for more information > [Accessibility](#)

To request additional copies of this publication in a different format please email:  
[marketinganddesign@belfastmet.ac.uk](mailto:marketinganddesign@belfastmet.ac.uk)

Further information for applicants including details on how to apply, enrolment onto courses with no entry criteria and payments can be found on our website at:

> [How to apply](#)

> [Entry criteria](#)









**Join our multi  
award-winning College**



**[www.belfastmet.ac.uk](http://www.belfastmet.ac.uk)**